

E**25 & 40 GALLON STEAM JACKETED
ELECTRIC TILTING KETTLE**

JOB NAME: _____

ITEM NO.: _____

NO. REQUIRED: _____

MODELS

- MT-25EO** - 25 gallon (95 liter), modular base, electric, tilting kettle
- MT-40EO** - 40 gallon (152 liter), modular base, electric, tilting kettle

DESCRIPTION

Shall be a Market Forge Model MT-25EO / MT-40EO steam jacketed tilting kettle with self-contained electric boiler.

Kettle shall be of stainless steel mounted in an enclosed cabinet base containing a 24 kW electrically powered steam boiler for operation of the kettle.

Cooking temperature shall be controlled with a steam control valve located on the right side of cabinet top. A hot and cold water fill faucet with swing spout shall be located on cabinet top. Kettle shall be equipped with a 2" (51mm) sanitary draw-off valve which shall be enclosed for sanitary purposes. This valve will empty into a swing drain which shall be removable without tools and shall be equipped with a removable stainless steel strainer. Unit shall include a one-piece counter-balanced stainless steel cover.

Cabinet base shall be of modular design to match other Market Forge equipment and enclose steam boiler. Kettle base shall have 6" (152mm) stainless steel legs with hold-down feet in the rear. The base front shall have reinforced die-formed stainless steel door with magnetic latches.

Kettle shall tilt upright to allow complete emptying of contents under positive control by turning the removable crank. Kettle is equipped with a steam trap located on bottom of kettle. A pan support, removable without tools, shall maintain pan in horizontal position not more than 2" (51mm) from kettle lip throughout tilting angle. 25 & 40 Gallon kettles come standard with 316 liner.

Pan support shall hold: one 12" x 20" x 2 1/2" deep pan (305mm x 508mm).

Steam boiler shall be nickel plated mounted independent of kettle within the cabinet base and allow for separate replacement of heating elements. The MT-25EO and MT-40EO shall bring 20 gallons of water to a boil, with cover down, in approximately 35 minutes. Unit shall include as standard: electric controls, low water cut-off, pressure gauge, air vent, safety relief valve, water level sight gauge, automatic cold water steam condenser system, automatic cold water boiler fill and electric solenoid valves for steam, drain and water. Boiler also includes and a single ASSE approved, check valve/backflow preventer to the boiler feed. Steam boiler shall be ASME constructed and National Board Registered.

OPERATION SHALL BE BY:

Self-contained high speed 24 kW electric self-generating steam boiler of the following characteristics:

- 208 volt AC, 3 phase 60 Hz
- 240 volt AC, 3 phase 60 Hz
- 480 volt AC, 3 phase 60 Hz



MT-40EO shown

SHIPPING WEIGHT

- **MT-25EO** - 410 lbs (186 kg)
- **MT-40EO** - 430 lbs (195 kg)

OPTIONS & ACCESSORIES

(at additional charge)

- **Cleaning Accessories**
 - 28" long kettle draw-off brush
 - 36" long clean up brush
 - 8-1/2" long clean up brush
 - 48" long kettle paddle
 - 48" long kettle whip
 - Tilting kettle accessory kit, includes draw-off brush, 36" clean up brush, 8-1/2" clean up brush, whip, solid strainer and pan holder
- Power tilt mechanism
- Prison package, includes lockable stainless steel covers, tamper proof screws, (4) 6" adjustable flanged feet
- Filter System
- Flanged Feet
- 60" water hose with quick disconnect (2) required.

FOOD SERVICE EQUIPMENT
 Electric Steam Jacketed Kettle


Tel: (802) 658-6600 • Fax: (802) 864-0183 • www.marketforge.com

E**25 & 40 GALLON STEAM JACKETED
ELECTRIC TILTING KETTLE**

DETAILS & DIMENSIONS

ELECTRICAL REQUIRMENTS

Volts	Phase	Amps
208	3	66.6
240	3	57.7
480	3	28.8

SERVICE CONNECTIONS

EP	Power Supply - Use wire suitable for at least 90°C, Nominal amps per line wire at 24 KW:
EC	Electrical Controls - 115 Volts Ac, 60Hz, 40 watts, 1/2" (13mm) conduit connection or equivalent. Use wire suitable for at least 90°C. Draws less than 1 AMP with power lift.
D	Drain - Pipe full 2" (51mm) NPT to floor drain. DO NOT MAKE SOLID CONNECTION TO FLOOR DRAIN. PVC and CPVC are not acceptable materials for drains.
HWK	Hot Water - 3/8" (10mm) NPT Female for Hot Water to Kettle Faucet (See Note 3)
CWK	Cold Water - 3/8" (10mm) NPT Female for Cold Water to Kettle Faucet (See Note 3)
CWB	Cold Water - 3/8" (10mm) NPT Female for Cold Water to Boiler. Water may be filtered (See Note 3).
CWC	Cold Water - 3/8" (10mm) NPT Female for Cold Water Condenser (See Note 3)

NOTES:

1. Recess area for kettle draw-off must be kept free of all piping and connections.
2. The only available space to supply utilities to the unit is the 6" (152mm) height between the floor and the cabinet.
3. Water pressure max 50 PSI (3.5kg/cm²) and min 25 PSI (1.8kg/cm²).

CAUTION: REMOTE KETTLE OPERATION If this boiler is feeding a remote kettle that will be more than 5 feet (1.5 meters) away, consult factory before ordering.

WATER SUPPLY

Good quality water feed is the responsibility of the owner. Water quality must be within the following general guidelines.

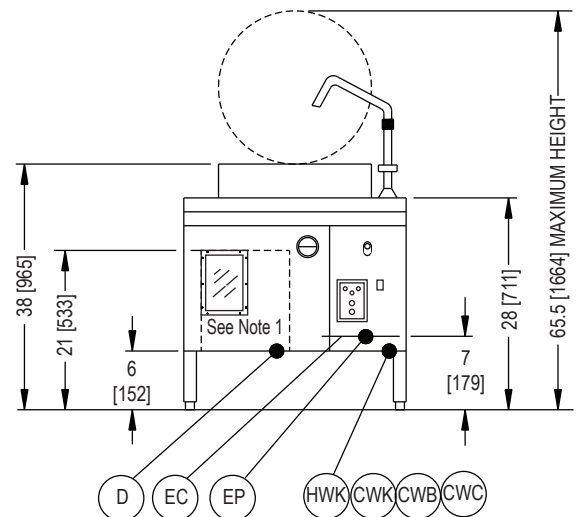
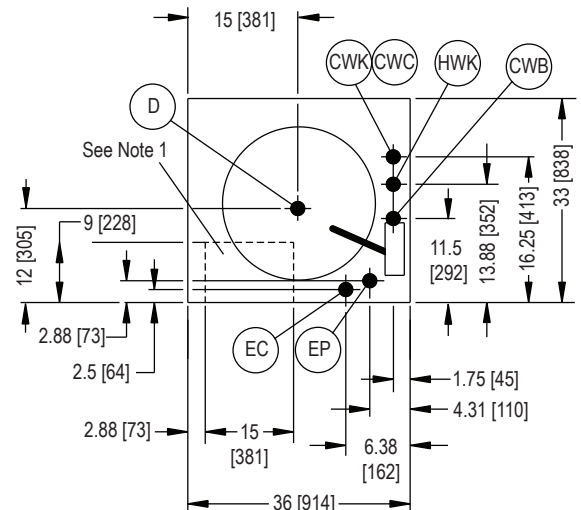
TDS: 40-125 ppm Hardness: 35-100 ppm Chlorine: <0.2 ppm

Silica: <13 ppm Chlorides: <25 ppm

Chloramine: <0.2 ppm pH: 7.0 - 8.5

The best defense against poor water quality is a water treatment system designed to meet your water quality conditions.

DIMENSIONS ARE IN INCHES [MM]



The manufacturer reserves the right to modify materials and specifications without notice.

FOOD SERVICE EQUIPMENT
Electric Steam Jacketed Kettle