



# STEAM COIL OPERATED STEAM GENERATOR

Job \_\_\_\_\_  
Item# \_\_\_\_\_



MODEL	CAPACITY
CSC-24S	24" (610 mm) wide by 33" (838 mm)
CSC-36S	36" (914 mm) wide by 33" (838 mm)

### OPERATION SHALL BE BY:

Unit equipped for operation with minimum incoming pressure of 20 psi (1.4 kg/cm<sup>2</sup>) and maximum incoming pressure of 50 psi (3.5 kg/cm<sup>2</sup>) producing a minimum output of 2.6 BHP and 85 pounds of steam per hour.

### OPTIONAL ITEMS AT EXTRA COST:

- Pressure reducing valve - Specify requirements
- Condensate return kit

### SPECIFICATIONS:

Shall be a Southbend Model \_\_\_\_\_, steam coil operated, stainless steel steam boiler at 15 psi mounted in a cabinet base:

- 24" (610 mm) wide
- 36" (914 mm) wide

Polished stainless steel cabinet base shall be of modular design, and equipped with 6" (152 mm) stainless steel legs and adjustable bullet feet, stainless steel counter top, and hinged doors with magnetic latches.

Unit shall include the following standard: automatic drain and water level control, cold water condenser, pressure gauge, water gauge glass, pressure control, steam trap, safety relief valve and cathodic descaler. Steam boiler shall be National Board Registered, and shall be suitable for installation, tight against a non-combustible wall. Steam boiler shall be ASME constructed for 15 pound operation.

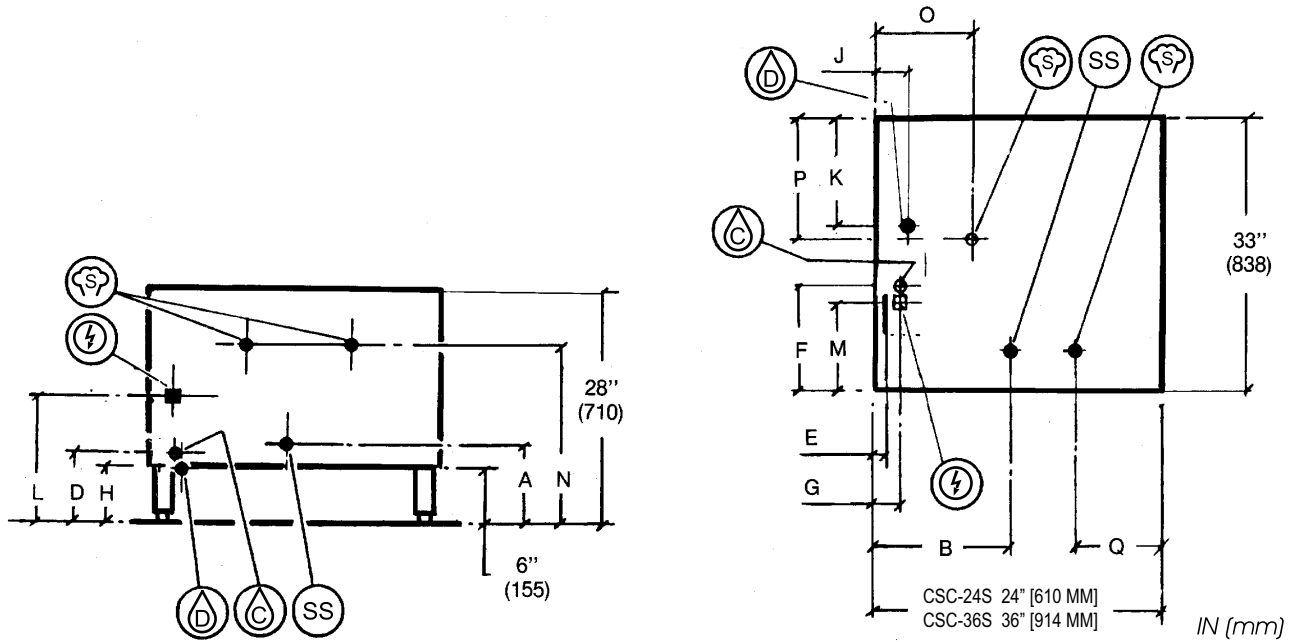
Steam boiler shall be automatically filled with hot water and brought to pressure when heat and water switches are turned on and automatically drained under pressure when switches are turned off. Cold water condenser shall automatically condense exhausted steam into water before releasing it to drain.

Before connecting water to this unit, have water supply analyzed to make sure hardness is no greater than 2.0 grains and pH no greater than 7.5. Water which fails to meet these standards should be treated by installation of a water conditioner.

**\*\*EQUIPMENT FAILURE CAUSED BY INADEQUATE WATER QUALITY IS NOT COVERED UNDER WARRANTY.\*\***



Models:     CSC-24S     CSC-36S



**SERVICE CONNCTIONS**

- C** – COLD WATER: 3/8" (10 mm) O.D. tubing at 25-50 PSI (170 - 345 kPa).
  - D** – DRAIN: 2" (51 mm) IPS piped to open floor drain. No solid connection.
  - E** – ELECTRICAL CONNECTION: Unless otherwise specified, field wiring electrical connection to be 120V, 60 Hz, 1 Phase with ground.
  - F** – STEAM TAKE-OFF CONNECTION: 3/4" (19 mm) IPS optional to operate adjacent equipment.
  - SS** – STEAM SUPPLY: 3/4" (19 mm) female pipe connection for steam supply 30-50 PSI (207-345 kPa)\*
- \* Pressure reducing valve is required if incoming pressure exceeds 50 PSI (345 kPa)*

**DIMENSIONS**

MODEL	CAPACITY	UNITS	A	B	C	D	E	F	G	H	J	K	L	M	N	O	P	Q
CSC-24S	24" (610 mm) x 33" (838 mm)	in	9"	17"	5"	7"	2"	13"	3"	5.75"	4"	11"	15"	11"	23"	11"	12"	10"
CSC-36S	36" (914 mm) x 33" (838 mm)	(mm)	(229)	(689)	(127)	(179)	(51)	(330)	(76)	(146)	(102)	(279)	(381)	(279)	(584)	(279)	(305)	(254)

**WATER QUALITY STATEMENT**

Water quality is the major factor affecting the performance of your appliance. If you are unsure of water quality, consult a local water treatment specialist and have the water analyzed. Your water supply must be within these general guidelines:

- Total dissolved solids .....Less than 60 PPM
- Total alkalinity .....Less than 20 PPM
- Silica.....Less than 13 PPM
- Chlorine .....Less than 30 PPM
- pH Factor .....7.0 - 8.5

Water which fails to meet these standards should be treated by installation of water conditioner.

**FAILURE OR MALFUNCTION OF THIS APPLIANCE DUE TO POOR WATER QUALITY IS NOT COVERED UNDER WARRANTY. CONTACT SOUTHBEND FOR WATER QUALITY SOLUTIONS.**

**INTENDED FOR COMMERCIAL USE ONLY.  
NOT FOR HOUSEHOLD USE.**



1100 Old Honeycutt Road, Fuquay-Varina, NC 27526  
(919) 762-1000 www.southbendnc.com