



Item No. \_\_\_\_\_

Project \_\_\_\_\_

Quantity \_\_\_\_\_

### Gas, Full-Size, Stacked/ChefSeries™ Convection Ovens

### Model: GCSF-[ES/EZ]2



Model GCSF-ES2 shown

#### PAN CAPACITY GUIDE [Per Oven/Total]

Pan Type	Rack Positions	Optimum
18" X 26" Full-Sheet	12/24 (w/extra pan racks)	6/12
12" X 20" Hotel*	12/24 (two pans per rack)	6/12

\* 2-1/2" deep pans

#### SHORT/BID SPECIFICATION

Convection Ovens shall be LANG Manufacturing Model GCSF-ES2 ChefSeries with [-ES = EnviroStar™; -EZ = EnviroZone™] Control Package, two factory stacked 60,000 BTU/hr. gas heated 6-pan full-size units, each with steam injection and simultaneous-opening heavy duty doors, with cool-touch handle; stainless steel exterior and porcelainized steel cooking compartment; powerful rear mounted two-speed fan; indirect fired heat exchanger; no unburned gasses in oven cavity; compartment lights and six pan racks per compartment standard; plus all the features listed and options/accessories checked:

#### STANDARD PRODUCT WARRANTY

- Five year, parts & labor
- LIFETIME warranty on doors

#### CONSTRUCTION FEATURES

- Heavy duty 430 Series stainless steel exterior, with attractive No. 4 finish
- Fully enclosed oven back
- Cooking compartment is porcelainized steel, standard
- Heavy duty, simultaneously-opening compartment doors, with large double pane tempered glass windows
- Powerful fan centered in back of compartment
- Compartment lighting standard
- Chrome steel 12 position pan slides with six chrome plated wire racks provided per oven
- 6" adjustable legs [standard] or optional 6" heavy duty casters

#### PERFORMANCE FEATURES

- Up to 525°F operating temperature range
- 60,000 BTU/hr power input
- Six full sheet pan capacity, set every-other-rack position
- Steam injection is standard
- Indirect fired heat exchanger; no unburned gasses in oven cavity
- Easy-clean-porcelain oven interior
- Cool-touch door handle
- Two-speed fan
- Energy saving electronic ignition
- Door interlock switch cuts power to fan & burners
- Back up control, standard

#### CONTROL PACKAGE

- EnviroStar™ Control [ES]**
  - Soft-Touch knob controls
  - Knob-set temperature in 25 degree increments, with LED indicators
  - Knob-set timer with large LED countdown display
  - Both Fahrenheit [°F] and Celsius [°C] on same label
  - 1-Shot & Pulse Steam touch pads
  - Pulse Steam: Interval between 1-second pulses is adjustable from 1 to 180 minutes.
  - Cook/Hold touch pad [150°F automatic setback]
  - HIGH-LOW speed fan touch pad
  - Power-ON touch pad [activates compartment lighting]
- EnviroZone™ Control [EZ]**
  - Solid state, icon driven, one-touch programmable controls
  - Up to 99 product programs, with multiple baking tiers
  - Time, temperature, heat loss and adjustable shelf compensation
  - Cook/Hold programming
  - 2-speed fan & variable-rate pulse-fan control
  - PC link programming
  - Modem [option]
  - HIGH-LOW speed fan touch pad
  - Power-ON and inspection light touch pads



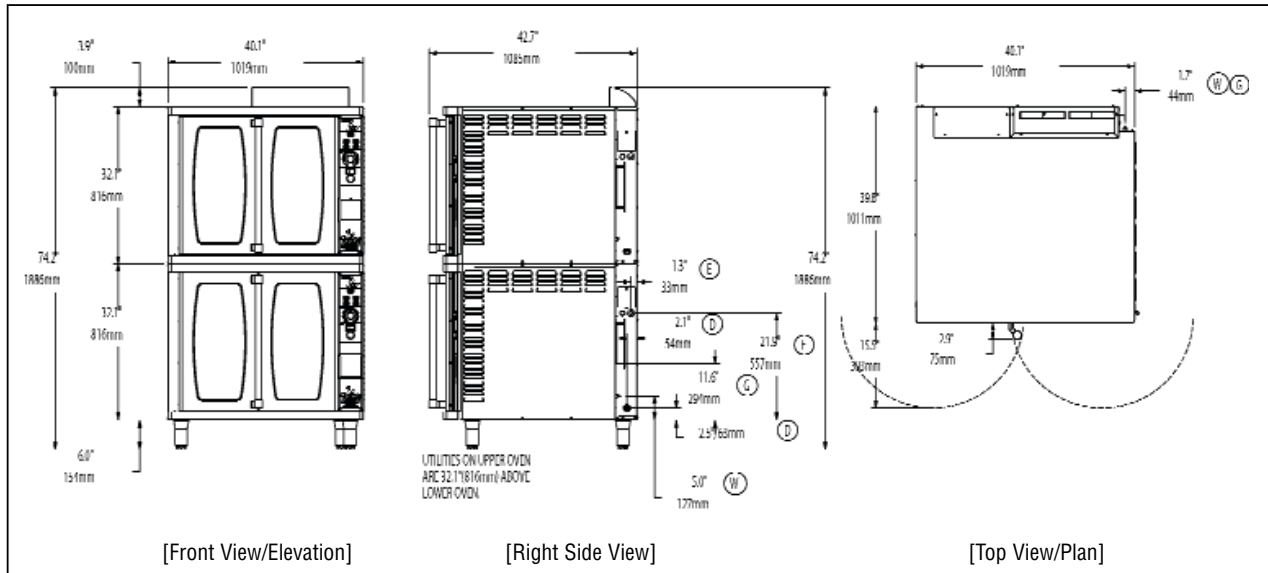
Sheet No. LSP-C26 (rev. 01/12)

**INSTALLATION REQUIREMENTS**

- ○○ G G Specify:  natural gas or  propane gas: via two 1/2" NPT connections
- (E) (E) Two 120V 1-Phase, 50/60 Hz electrical connections [Cords & Plugs included]
- (W) (W) Two 3/8" NPT cold water connection [For steam injection]
- (D) (D) Two 3/4" NPT for drain recommended
- Installation under approved vent hood required. Contact local codes.
- Direct vent connector option required for venting through ducts
- Gas pressure regulator provided
- [All connections from rear. See below]

**OPTIONS & ACCESSORIES [Each Oven, Except\*]**

- 6" heavy duty casters
- Gas Manifold Kit to branch single inlet line to both ovens\*
- Stainless steel oven compartment
- Extra wire pan racks [6 provided as std. in each oven]



Model	Height x Width x Depth (with standard legs)	Clearance from combustible surface	Weight		Freight Class
			Actual	Shipping	
GCSF-ES2	74" x 40.4" x 40" 1879mm x 1026mm x 1016mm	Sides: 0 Back: 1 Floor: 4	1110 lbs. 503 kg	1240 lbs. 562 kg	70

Model	(E) Total Electrical Requirements [Via two connections]				(G) Total Gas Requirements [Via two connections]
	Voltage/Cycles	Total kW	Phase	Amps/Line	
GCSF-ES2	120V/60Hz	1.4	1	11.6	3/8" NPT

**CAD SYMBOLS & PRICING**



Due to continuous improvements, specifications subject to change without notice.



Sheet No. LSP-C26 (rev. 01/12)

LANG MANUFACTURING • 10 SUNNEN DR. ST. LOUIS, MO 63143  
 Phone: 314-678-6315 • FAX: 314-781-3636 • www.langworld.com