



NOR-LAKE, INCORPORATED  
727 Second Street  
Hudson, Wisconsin 54016

800-955-5253  
715-386-2323  
866-961-5253 Parts  
800-388-5253 Service  
715-386-6149 FAX  
www.norlake.com

## ADVANTEDGE™ UNDERCOUNTER / WORKTABLE REFRIGERATORS

UNDERCOUNTER / WORKTABLE REFRIGERATORS



STANDARD CONDENSER FILTER IS REMOVABLE WITHOUT TOOLS

NLUR48A

PROJECT: .....

ITEM NUMBER: .....

MODEL NUMBER: .....

### SPECIFICATIONS FOR: NLUR27A, NLUR36A, NLUR48A, NLUR60A, NLUR72A

- **Finish:** Stainless steel interior and exterior
- **Insulation:** The complete cabinet and doors are foamed-in-place with polyurethane insulation
- **Hardware:** Curved handle with recessed pocket; one vinyl coated shelf per door; 6" overall height casters; front-breathing design allows for zero-clearance installation on sides, back and top
- **Electrical:** 115 volt, 60 Hz, 1 phase with cord and plug
- **Refrigeration:** Self-contained forced air refrigeration system. The condensate is collected and automatically evaporated from an energy efficient vaporizer. Refrigerant flow is controlled by a capillary tube. R290 refrigerant. Temperature range: +34°F to +38°F.
- **Approvals:** UL, C-UL Safety, and UL Sanitation\*\*, and ADA compliant\*\*\*

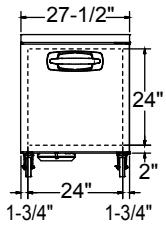
### STANDARD FEATURES

- Air cooled condensing unit
- Automatic condensate vaporizer
- Automatic defrost
- Capillary tube system
- Casters
- Curved handle with recessed pocket
- Magnetic gaskets
- Self-closing doors
- Condenser filter screen
- Stainless steel interior and exterior
- One interior shelf per door
- UL, C-UL Safety, and UL Sanitation listed\*\*
- Warranties: 3 year parts & labor, 5 year compressor

### OPTIONAL FEATURES\*

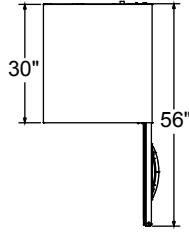
- Additional shelves
- Stainless steel backsplash
- Drawers
- Low profile casters\*\*\*
- Single and double oversshelf assemblies
- Stacking kit, NLUR27A only
- 4" base for NLUR27A
- 6" legs in lieu of casters (shipped loose)
- Door locks
- Stainless steel back panel

\* Most options are available two weeks from receipt of order. Please contact us for specific questions.  
 \*\* C-UL is Underwriters Laboratories Safety Certification Mark which indicates that UL has tested the equipment to applicable CSA Standards.  
 \*\*\* Casters available for 34" or 32" overall cabinet height.

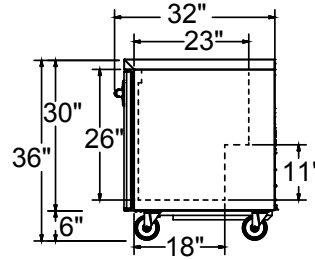


FRONT VIEW

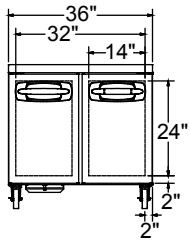
NLUR27A



TOP VIEW

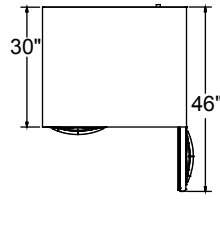


ALL MODELS  
SIDE VIEW

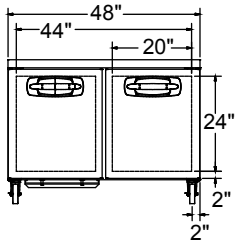


FRONT VIEW

NLUR36A

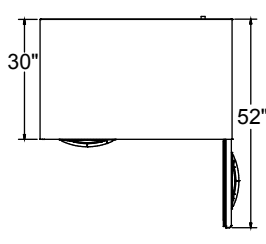


TOP VIEW

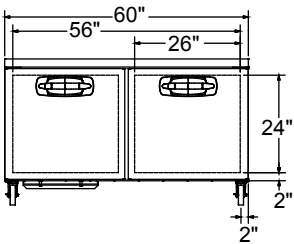


FRONT VIEW

NLUR48A

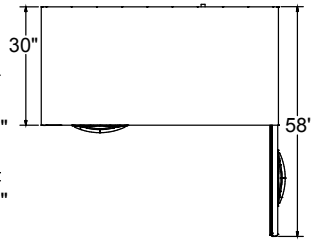


TOP VIEW

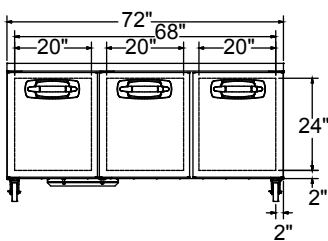


FRONT VIEW

NLUR60A

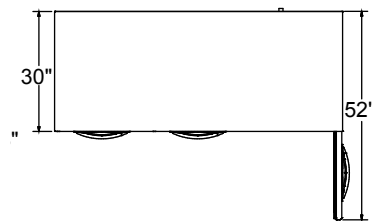


TOP VIEW



FRONT VIEW

NLUR72A



TOP VIEW

**SPECIFICATIONS**

Models	NLUR27A	NLUR36A	NLUR48A	NLUR60A	NLUR72A
Crated Weight (lbs) (kg)	190 (86)	220 (100)	255 (116)	305 (138)	365 (166)
Crated Height (in) (cm)	36-1/4 (92)	36-1/4 (92)	36-1/4 (92)	36-1/4 (92)	36-1/4 (92)
Crated Width (in) (cm)	30-1/8 (75)	37-1/4 (95)	51-1/8 (130)	63 (160)	74-3/8 (189)
Crated Depth (in) (cm)	33-1/2 (85)	33-1/2 (85)	33-1/2 (85)	33-1/2 (85)	33-1/2 (85)
Interior Height (in) (cm)	26-1/8 (66)	26-1/8 (66)	26-1/8 (66)	26-1/8 (66)	26-1/8 (66)
Interior Width (in) (cm)	24 (61)	32-1/2 (82)	44 (112)	56 (142)	68 (172)
Interior Depth (in) (cm)	23 (58)	23 (58)	23 (58)	23 (58)	23 (58)
Overall Height (in) (cm)	36 (91)	36 (91)	36 (91)	36 (91)	36 (91)
Overall Width (in) (cm)	27-1/2 (70)	36 (91)	48 (122)	60 (152)	72 (183)
Overall Depth (in) (cm)	30 (76)	30 (76)	30 (76)	30 (76)	30 (76)
Gross Cubage (CuFt) (L)	7.2 (203)	9.9 (280)	13.4 (379)	16.2 (458)	20.5 (580)
Number of Shelves	1	2	2	2	3
Shelf Area (SqFt) (Sqm)	2.75 (0.26)	4.12 (0.38)	5.30 (0.49)	7.32 (0.68)	8.05 (0.75)
Number of Casters	4	4	4	4	4
Condensing Unit Size	1/5 HP	1/5 HP	1/5 HP	3/8 HP	3/8 HP
Refrigerant	R290	R290	R290	R290	R290
Electrical Characteristics	115/60/1	115/60/1	115/60/1	115/60/1	115/60/1
Cord and Plug Furnished	Yes	Yes	Yes	Yes	Yes
NEMA Plug Configuration	5-15P	5-15P	5-15P	5-15P	5-15P
Total Amp Draw	2.1	2.1	2.1	3.2	3.2

Specifications subject to change without notice.

