

# STANDARD SERIES UNDERBAR DRAINBOARDS

MODEL: \_\_\_\_\_ PROJECT: \_\_\_\_\_ ITEM #: \_\_\_\_\_ QTY: \_\_\_\_\_

## PRODUCT IMAGE



18-GS24 SHOWN

**AVAILABLE IN 1800 or 2100 SERIES**

## STANDARD FEATURES

- **Drainboard**  
20 gauge embossed stainless steel reinforced with welded braces every 6 inches.  $\frac{3}{4}$ " radius on all vertical and horizontal edges
- **Front Apron**  
22 gauge stainless steel clad over 20 gauge galvanized steel
- **Backsplash**  
22 gauge stainless steel
- **Sides**  
20 gauge stainless steel
- **Back and Bottom**  
20 gauge galvanized steel
- **Legs**  
1  $\frac{5}{8}$ " tubular 16 gauge galvanized steel with grey plastic bullet foot
- **Plumbing**  
1" IPS drain connection

## OPTIONAL ACCESSORIES

- **C-36** Upgrade: Stainless Steel Legs
- **C-39** Right End Side Splash
- **C-40** Left End Side Splash
- **C-47** Right End Return (Corner)
- **C-48** Left End Return (Corner)
- **S-“XX”** Single Speedrail (“XX” denotes 24, 30”, or 36” or 48”)
- **D-“XX”** Double Speedrail (“XX” denotes 24, 30”, or 36”)



**CERTIFICATIONS:**

**APPROVED BY:**

Due to our commitment to continued product improvement, specifications are subject to change without notice.

Printed in the USA

**Krowne Metal Corporation**

100 Haul Rd. Wayne, NJ 07470 • Toll Free: (800) 631-0442 • Fax: (973) 872-1129  
sales@krowne.com • www.krowne.com • www.facebook.com/KrowneMetal • www.twitter.com/KrowneMetal

Rev. 09/2011  
No. 4.8

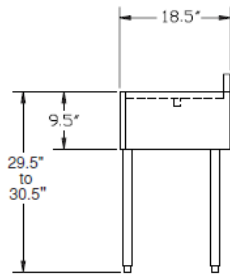
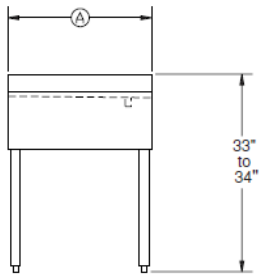
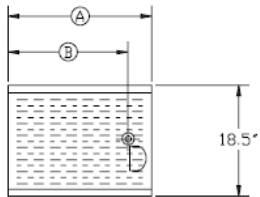
KaTom Restaurant Supply, Inc.



# STANDARD SERIES UNDERBAR DRAINBOARDS

MODEL: \_\_\_\_\_ PROJECT: \_\_\_\_\_ ITEM #: \_\_\_\_\_ QTY: \_\_\_\_\_

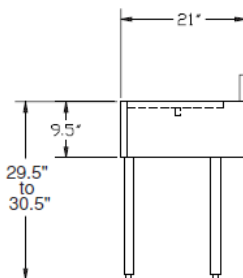
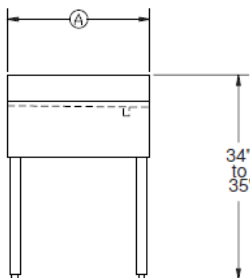
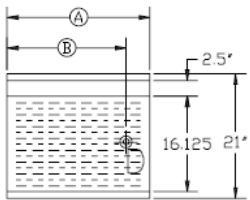
## 1800 SERIES



Model Numbers	Length Ⓐ	Left Side to Drain Ⓑ	Weight (lbs.)
18-GS12	1'-0"	6"	20
18-GS18	1'-6"	14"	26
18-GS24	2'-0"	20"	30
18-GS30	2'-6"	26"	35
18-GS36	3'-0"	32"	40
18-GS48	4'-0"	24"	50

**MECHANICAL REQUIREMENTS:** 1" IPS drain connection

## 2100 SERIES



Model Numbers	Length Ⓐ	Left Side to Drain Ⓑ	Weight (lbs.)
21-GS12	1'-0"	6"	25
21-GS18	1'-6"	14"	30
21-GS24	2'-0"	20"	40
21-GS30	2'-6"	26"	45
21-GS36	3'-0"	32"	50
21-GS48	4'-0"	24"	60

**MECHANICAL REQUIREMENTS:** 1" IPS drain connection



**APPROVED BY:**

**CERTIFICATIONS:**

Due to our commitment to continued product improvement, specifications are subject to change without notice.

Printed in the USA

**Krowne Metal Corporation**

100 Haul Rd. Wayne, NJ 07470 • Toll Free: (800) 631-0442 • Fax: (973) 872-1129

sales@krowne.com • www.krowne.com • www.facebook.com/KrowneMetal • www.twitter.com/KrowneMetal

KaTom Restaurant Supply, Inc.

Rev. 09/2011  
No. 4.8