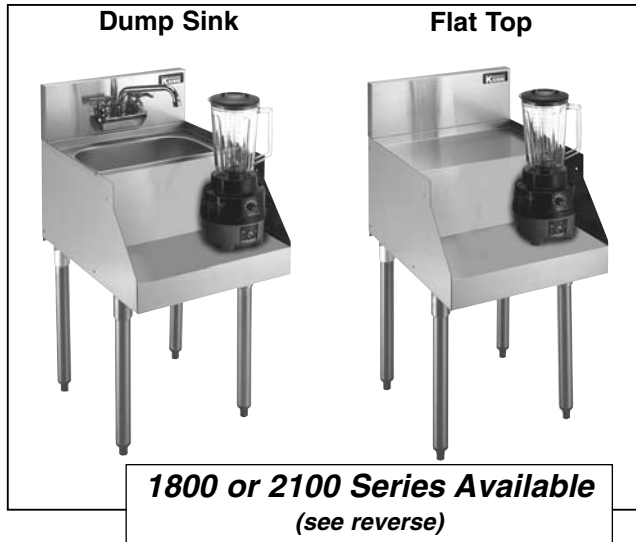


Model: \_\_\_\_\_

Item #: \_\_\_\_\_ Quantity: \_\_\_\_\_

Project: \_\_\_\_\_



- **Dump Sink:**  
20 gauge 304 series stainless steel with a 1 1/2" drain located in center. 6" deep.
- **Top (Flat Top):**  
20 gauge 304 series stainless steel.
- **Front Apron:**  
20 gauge 304 series stainless steel.
- **Backsplash:**  
20 gauge 304 series stainless steel.
- **Sides:**  
18 gauge 304 series stainless steel.
- **Blender Shelf:**  
20 gauge 304 series stainless steel.
- **Back and Bottom:**  
20 gauge galvaneal.
- **Legs:**  
1 5/8" tubular 16 gauge stainless steel with grey thermoplastic bullet foot.
- **Electrical:**  
Duplex outlet located underneath.
- **Plumbing:**  
1/2" IPS cold water.  
1" IPS drain connection.

### Accessories

- Towel Ring
- Side Splash (specify left or right)
- Perforated Basket

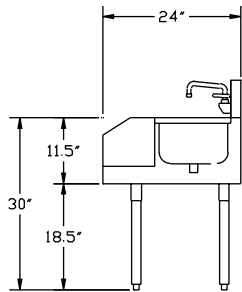
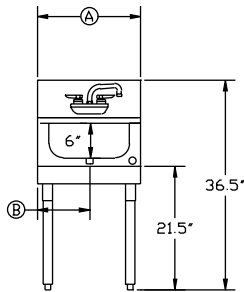
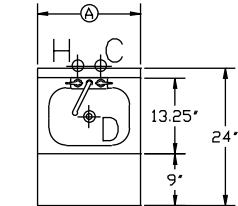
Approved By: \_\_\_\_\_

Model: \_\_\_\_\_ Item #: \_\_\_\_\_ Quantity: \_\_\_\_\_ Project: \_\_\_\_\_

## 1800 Series

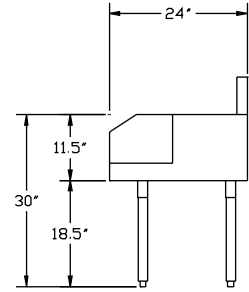
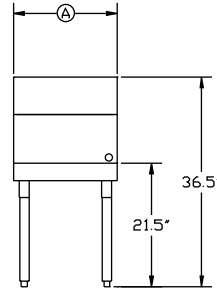
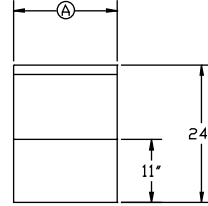
### Dump Sink

Model Numbers	Length (A)	Left Side to Drain (B)	Depth	Dump Sink Size	Weight lbs.
KR18-12BD	1'-0"	6"	24"	10" x 12" x 6"	43
KR18-14BD	1'-2"	7"	24"	10" x 12" x 6"	48
KR18-18BD	1'-6"	9"	24"	10" x 14" x 6"	53



### Flat Top

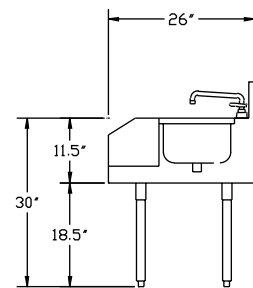
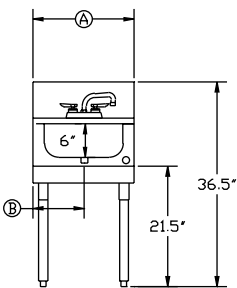
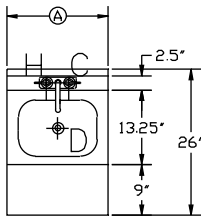
Model Numbers	Overall Length (A)	Depth	Weight lbs.
KR18-12BF	1'-0"	24"	39
KR18-14BF	1'-2"	24"	43
KR18-18BF	1'-6"	24"	48



## 2100 Series

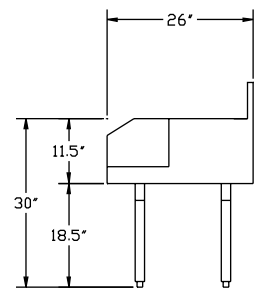
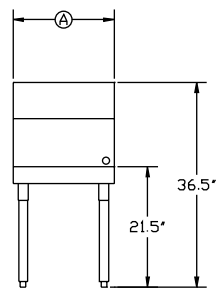
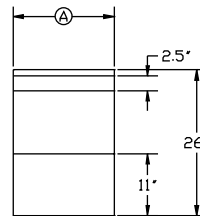
### Dump Sink

Model Numbers	Length (A)	Left Side to Drain (B)	Depth	Dump Sink Size	Weight lbs.
KR21-12BD	1'-0"	6"	24"	10" x 12" x 6"	43
KR21-14BD	1'-2"	7"	24"	10" x 12" x 6"	48
KR21-18BD	1'-6"	9"	24"	10" x 14" x 6"	53



### Flat Top

Model Numbers	Overall Length (A)	Depth	Weight lbs.
KR21-12BF	1'-0"	26"	39
KR21-14BF	1'-2"	26"	43
KR21-18BF	1'-6"	26"	48



### Mechanical Requirements:

1/2" IPS hot and cold water  
1 1/2" IPS drain connection

Approved By: \_\_\_\_\_

Due to our commitment to continued product improvement, specifications are subject to change without notice.