



# ROYAL SERIES UNDERBAR STORAGE CABINETS

MODEL: \_\_\_\_\_ PROJECT: \_\_\_\_\_ ITEM #: \_\_\_\_\_ QTY: \_\_\_\_\_

## PRODUCT IMAGES



KR18-S24 SHOWN



KR18-SD24 SHOWN

## STANDARD FEATURES

- **Drainboard**  
20 gauge embossed stainless steel reinforced with welded braces every 6" . 3/4" radius on all vertical and horizontal edges
- **Front Apron**  
20 gauge stainless steel
- **Backsplash**  
20 gauge stainless steel
- **Sides**  
20 gauge stainless steel
- **Back and Bottom**  
20 gauge stainless steel
- **Doors (Optional)**  
20 gauge stainless steel
- **Legs**  
1 5/8" tubular 16 gauge stainless steel with grey plastic bullet foot
- **Plumbing**  
1" IPS drain connection

## AVAILABLE IN 1800 or 2100 SERIES

## OPTIONAL ACCESSORIES

- **KR-SS**      Stainless Steel Middle Shelf for Cabinet
- **KR-310**    Right End Splash
- **KR-311**    Left End Splash



### APPROVED BY:

### CERTIFICATIONS:

Due to our commitment to continued product improvement, specifications are subject to change without notice.

Printed in the USA

**Krowne Metal Corporation**

100 Haul Rd. Wayne, NJ 07470 • Toll Free: (800) 631-0442 • Fax: (973) 872-1129  
sales@krowne.com • www.krowne.com • www.facebook.com/KrowneMetal • www.twitter.com/KrowneMetal

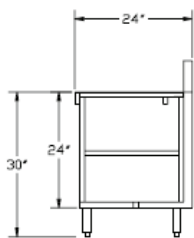
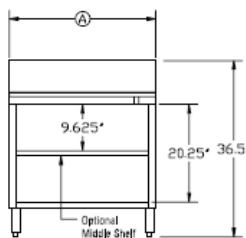
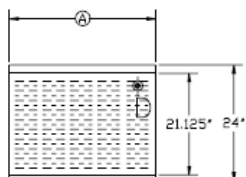
Rev. 08/2015  
No. 5.23



# ROYAL SERIES UNDERBAR STORAGE CABINETS

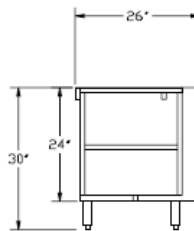
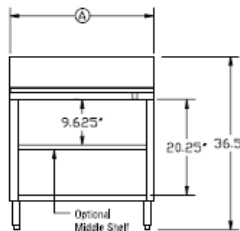
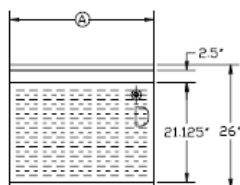
MODEL: \_\_\_\_\_ PROJECT: \_\_\_\_\_ ITEM #: \_\_\_\_\_ QTY: \_\_\_\_\_

## 1800 SERIES



Model Numbers	Overall Length Ⓐ	Doors	Weight (lbs.)
KR18-S12	1'-0"	N/A	50
KR18-SD12	1'-0"	1	60
KR18-S18	1'-6"	N/A	65
KR18-SD18	1'-6"	1	75
KR18-S24	2'-0"	N/A	100
KR18-SD24	2'-0"	1	115
KR18-S30	2'-6"	N/A	100
KR18-SD30	2'-6"	2	130
KR18-S36	3'-0"	N/A	140
KR18-SD36	3'-0"	2	160
KR18-S48	4'-0"	N/A	150
KR18-SD48	4'-0"	2	170

## 2100 SERIES



Model Numbers	Overall Length Ⓐ	Doors	Weight (lbs.)
KR21-S12	1'-0"	N/A	50
KR21-SD12	1'-0"	1	60
KR21-S18	1'-6"	N/A	65
KR21-SD18	1'-6"	1	75
KR21-S24	2'-0"	N/A	100
KR21-SD24	2'-0"	1	115
KR21-S30	2'-6"	N/A	100
KR21-SD30	2'-6"	2	130
KR21-S36	3'-0"	N/A	140
KR21-SD36	3'-0"	2	160
KR21-S48	4'-0"	N/A	150
KR21-SD48	4'-0"	2	170

MECHANICAL REQUIREMENTS: 1" IPS drain connection.



APPROVED BY:

CERTIFICATIONS:

Due to our commitment to continued product improvement, specifications are subject to change without notice.