



# ROYAL SERIES UNDERBAR LIQUOR WORKSTATIONS

MODEL: \_\_\_\_\_ PROJECT: \_\_\_\_\_ ITEM #: \_\_\_\_\_ QTY: \_\_\_\_\_

## PRODUCT IMAGE



KR18-W60C-10 SHOWN

AVAILABLE IN 1800 SERIES

## OPTIONAL ACCESSORIES

- **KR-101** Condiment Tray
- **KR-103** Stainless Steel Divider
- **KR-200** Upgrade: Low Lead Faucet
- **KR-310** Right End Splash
- **KR-311** Left End Splash
- **KR-320** Partial Sliding Cover (Using Bottle Wells)
- **KR-321** Full Sliding Cover (No Bottle Wells)
- **KR-501** Towel Ring
- **KR-701** Perforated Dump Basket
- **KR-806** Upgrade: 6" Longer Stainless Steel Legs

## STANDARD FEATURES

- **Drainboard**  
20 gauge stainless steel
- **Dump Sink (Blender)**  
20 gauge stainless steel. 10" x 14" x 7" deep bowl with 1 1/2" drain in center
- **Blender Shelf**  
22 gauge stainless steel
- **Interior (Ice Bin)**  
20 gauge stainless steel
- **Cold Plate**  
Cast aluminum post mix plate with 10 circuits. Plate is sealed into bottom. Each circuit is 5/16" OD stainless steel tubing. Two full with remainder to be half circuits. Bump and swedge fittings on ends
- **Front Apron**  
20 gauge stainless steel clad over 20 gauge galvanized steel
- **Backsplash**  
20 gauge stainless steel
- **Back and Bottom**  
20 gauge galvanized steel
- **Legs**  
1 5/8" tubular 16 gauge stainless steel with grey plastic bullet foot
- **Tube Access (Cold Plate)**  
1800 Series: 3/4" x 3 1/2" cutout in left side of backsplash  
2100 Series: 1/2" x 4.3" cutout in left side of backsplash
- **Electrical (Blender)**  
Duplex outlet located underneath Blender Shelf
- **Insulation (Ice Bin)**  
Foamed-in-place polyurethane
- **Plumbing**  
Hot/Cold Water: 1/2" IPS  
Cold Plate: 1/2" IPS drain connection  
No Cold Plate: 1" IPS drain connection  
Drainboard: 1" IPS drain connection  
Dump Sink: 1 1/2" IPS drain connection
- **Faucet**  
4" center wall or deck mount faucet with ceramic cartridge valves
- **Low Lead Compliance**  
Low Lead Compliant faucets meet California AB-1953 and Vermont S152 standards



**CERTIFICATIONS:**

**APPROVED BY:**

Due to our commitment to continued product improvement, specifications are subject to change without notice.

Printed in the USA

**Krowne Metal Corporation**

100 Haul Rd. Wayne, NJ 07470 • Toll Free: (800) 631-0442 • Fax: (973) 872-1129  
sales@krowne.com • www.krowne.com • www.facebook.com/KrowneMetal • www.twitter.com/KrowneMetal

Rev. 03/2012  
No. 5.5

KaTom Restaurant Supply, Inc.

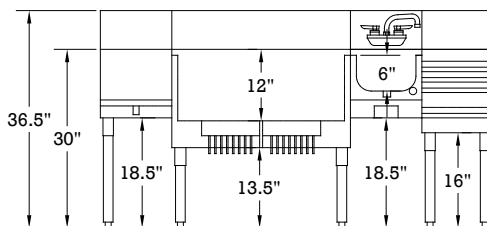
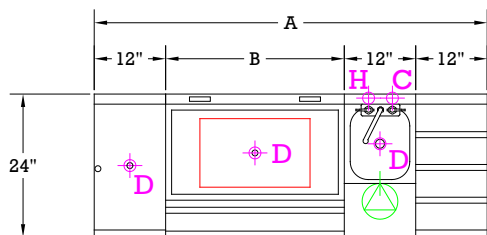


# ROYAL SERIES UNDERBAR LIQUOR WORKSTATIONS

MODEL: \_\_\_\_\_ PROJECT: \_\_\_\_\_ ITEM #: \_\_\_\_\_ QTY: \_\_\_\_\_

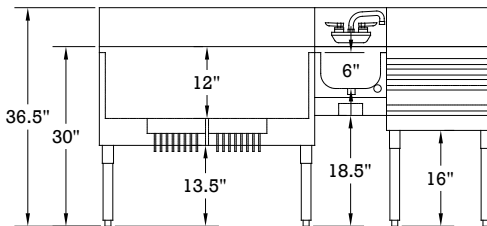
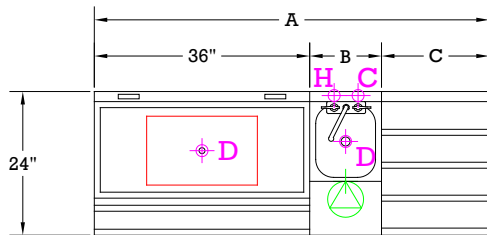
Model Numbers	Overall Length A	Ice Bin Length B	Blender Length	Drainboard Length	Liquor Display Length	Cold Plate Circuits	Weight (lbs.)
KR18-W60C-10	5'-0"	24"	12"	12"	12"	10	262
KR18-W66C-10	5'-6"	30"	12"	12"	12"	10	289
KR18-W72C-10	6'-0"	36"	12"	12"	12"	10	312

**MECHANICAL REQUIREMENTS:** 1/2" IPS hot and cold water. 1/2" IPS drain connection on Cold Plate. 1 1/2" IPS drain connection on Sink Bowls.



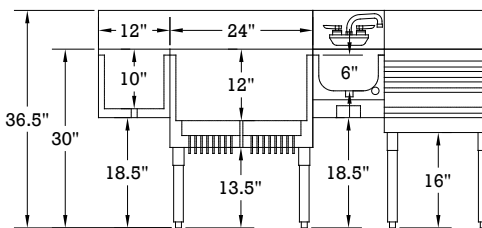
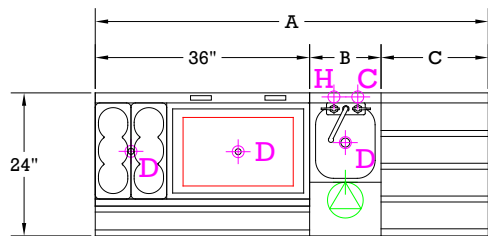
Model Numbers	Overall Length A	Ice Bin Length	Blender Length B	Liquor Display Length C	Cold Plate Circuits	Weight (lbs.)
KR18-W60D-10	5'-0"	36"	12"	12"	10	273
KR18-W66D-10	5'-6"	36"	12"	18"	10	302
KR18-W72D-10	6'-0"	36"	18"	18"	10	330

**MECHANICAL REQUIREMENTS:** 1/2" IPS hot and cold water. 1/2" IPS drain connection on Cold Plate. 1 1/2" IPS drain connection on Sink Bowls.



Model Numbers	Overall Length A	Ice Bin Length	Blender Length B	Liquor Display Length C	Cold Plate Circuits	Weight (lbs.)
KR18-W60E-10	5'-0"	36"	12"	12"	10	304
KR18-W66E-10	5'-6"	36"	12"	18"	10	337
KR18-W72E-10	6'-0"	36"	18"	18"	10	369

**MECHANICAL REQUIREMENTS:** 1/2" IPS hot and cold water. 1/2" IPS drain connection on Cold Plate. 1 1/2" IPS drain connection on Sink Bowls.



**APPROVED BY:**

Due to our commitment to continued product improvement, specifications are subject to change without notice.

**CERTIFICATIONS:**

Printed in the USA

**Krowne Metal Corporation**

100 Haul Rd. Wayne, NJ 07470 • Toll Free: (800) 631-0442 • Fax: (973) 872-1129

sales@krowne.com • www.krowne.com • www.facebook.com/KrowneMetal • www.twitter.com/KrowneMetal

KaTom Restaurant Supply, Inc.

Rev. 003/2012

No. 5.5