



# ROYAL SERIES UNDERBAR GLASS STORAGE BINS

MODEL: \_\_\_\_\_ PROJECT: \_\_\_\_\_ ITEM #: \_\_\_\_\_ QTY: \_\_\_\_\_

## PRODUCT IMAGE



KR18-GSB1 SHOWN

AVAILABLE IN 1800 or 2100 SERIES

## OPTIONAL ACCESSORIES

- **KR-310** Right End Splash
- **KR-311** Left End Splash

## STANDARD FEATURES

- **Drainboard**  
20 gauge stainless steel reinforced with welded braces every 6".  
 $\frac{3}{4}$ " radius on all vertical and horizontal edges
- **Front Apron**  
20 gauge stainless steel
- **Sides**  
20 gauge stainless steel
- **Backsplash**  
20 gauge stainless steel
- **Bottom**  
20 gauge stainless steel sloped to rear with drain
- **Legs**  
1  $\frac{5}{8}$ " tubular 16 gauge stainless steel with grey plastic bullet foot
- **Plumbing**  
1" IPS drain connection



**CERTIFICATIONS:**

**APPROVED BY:**

Due to our commitment to continued product improvement, specifications are subject to change without notice.

Printed in the USA

**Krowne Metal Corporation**

100 Haul Rd. Wayne, NJ 07470 • Toll Free: (800) 631-0442 • Fax: (973) 872-1129  
sales@krowne.com • www.krowne.com • www.facebook.com/KrowneMetal • www.twitter.com/KrowneMetal

KaTom Restaurant Supply, Inc.

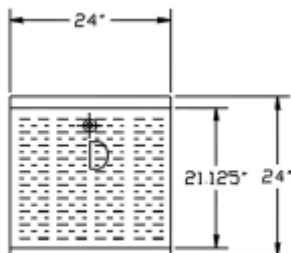
Rev. 12/2012  
No. 5.19



# ROYAL SERIES UNDERBAR GLASS STORAGE BINS

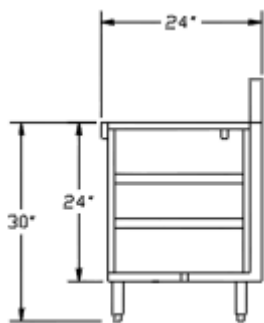
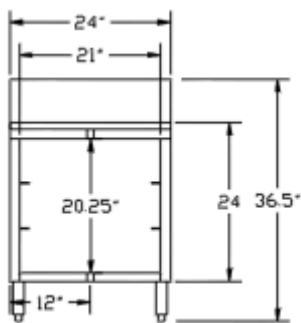
MODEL: \_\_\_\_\_ PROJECT: \_\_\_\_\_ ITEM #: \_\_\_\_\_ QTY: \_\_\_\_\_

## 1800 SERIES

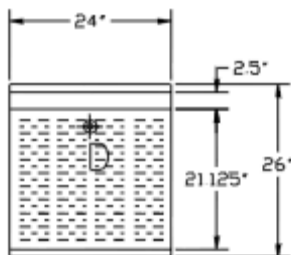


Model Numbers	Overall Length	Left Side to Drain	Depth	Top	Number of Rack Slides	Weight (lbs.)
KR18-GSB1	2'-0"	12"	24"	Drainboard	3	65

**MECHANICAL REQUIREMENTS:** 1" IPS drain connection.

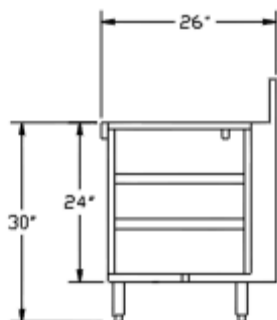
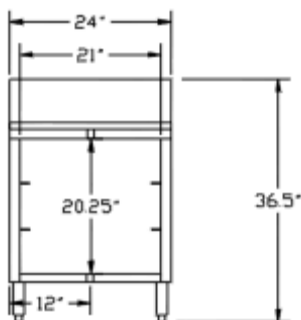


## 2100 SERIES



Model Numbers	Overall Length	Left Side to Drain	Depth	Top	Number of Rack Slides	Weight (lbs.)
KR21-GSB1	2'-0"	12"	26"	Drainboard	3	65

**MECHANICAL REQUIREMENTS:** 1" IPS drain connection.



**APPROVED BY:** \_\_\_\_\_

**CERTIFICATIONS:**

Due to our commitment to continued product improvement, specifications are subject to change without notice.