

## COMMANDER 18-6

### Automatic Single Tank Door Type Dishwasher

- Automatic door type, single tank dishwasher with timed wash and rinse cycle
- 0.72 gallon/rack
- Capacity is 65- 20" x 20" racks per hour or 1625 dishes per hour
- Fully automatic operation
- RackAware™ Automatic Rack Sensing System\* only runs a cycle when a rack is present
- Selectable 2 minute extended wash cycle
- Field convertible straight through to corner
- Digital temperature indicators for wash and rinse temperature



RackAware™ Automatic Rack Sensing System\* only runs a cycle when a rack is present

### STANDARD FEATURES

- SureFire® Start-Up & Check-Out Service
- Non-proprietary commercially available pump motor and parts
- “Easy Clean” front-mounted wash tank
- Tank heat: electric immersion heater or steam injectors
- Top-mounted NEMA 12 control panel
- Single point electrical connection: motor, controls, heater and optional built-in booster (when selected)
- Door safety switch
- Low water protection
- Override switches for de-liming and extended wash cycle on front control panel
- Vent fan connection provision
- Easy-glide doors
- Detergent connection provision
- Manifold clean-out brush
- S/S frame, legs and feet
- S/S front panel
- End caps/pipe plugs secured to prevent loss

### OPTIONS

- VaporGuard™ Condensation Removal System (refer to VaporGuard accessory sheet for information)
- Pressure reduction valve and line strainer
- Stainless steel steam coil tank heat
- Steam booster
- Built-in electric booster
- Remote electric booster
- Security package
- Totally enclosed motor
- Door activated drain closer
- Plastic 20" x 20" racks (plate or silver)
- Drain quench system

### AUTOQUOTES



Commander 18-6

\*Patent Pending

Capacity Per Hour	65 racks 1625 dishes 80-160 meals			
Tank Capacity	6.4 gallons			
Motor Size	1 hp (wash)			
Electric Usage	5.0 Kw 208v 5.0 Kw 240v 5.0 Kw 380v 5.0 Kw 480v			
	Built-in booster 40° - 70° rise 10.1 Kw 208v 13.5 Kw 240v 13.5 Kw 380v 13.5 Kw 480v			
Steam Consumption at 20 psi min.	6.0 Kw remote booster 40° rise 12.0 Kw remote booster 70° rise			
	11 lbs./hour tank 22 lbs./hour booster 40° rise 43 lbs./hour booster 70° rise			
Final Rinse Peak Flow at 20 psi min.	4.36 gallons/minute			
Final Rinse Consumption at 20 psi min.	47 gallons/hour 0.72 gallons/rack			
Exhaust Hood Requirement	500 cfm			
Peak Rate Drain Flow	9 gallons/minute			
Shipping Weight	400 lbs.			
Current Draw Amps	Steam	Electric w/o booster	Electric w/ built-in booster	
	208/1/60	9.3	33.3	81.9
	240/1/60	8.1	28.9	85.2
	208/3/60	5.1	19	47
	240/3/60	4.2	16.2	48.7
	480/3/60	2.3	8.3	24.5
380/3/50	2.8	10.4	30.9	

Note: Due to product improvement we reserve the right to change information and specifications without notice.

### SPECIFICATIONS

**CONSTRUCTION-** Hood and tank constructed of 16 gauge type 304 S/S. Hood unit of all welded seamless construction. S/S frame, legs and feet. All internal castings are non-corrosive lead free nickel alloy or bronze.

**DOORS-** Three (both sides and front) simultaneously opening doors. Operating doors have fingertip control, balanced by externally mounted springs. (Corner installations have two simultaneously opening doors at right angles.) All doors have easy-glide strips. Extra large die formed type 304 S/S doors ride in all S/S channels. A triple ply leading edge on the door channels made of S/S.

**PUMP-** Centrifugal type “packless” pump with a brass petcock drain. Construction includes ceramic seal and a balanced cast impeller on a precision ground stainless steel shaft, extension or sleeve. All working parts mounted as an assembly and removable as a unit without disturbing pump housing. One 1 hp motor, standard horizontal C-face frame, drip proof, internally cooled with ball-bearing construction.

**CONTROLS-** Top mounted control cabinet, NEMA 12 rated, housing motor controls and overload protection, transformer, contactors and all dishwasher integral controls. Integrated rack sensing system.

**SPRAY SYSTEM-** Wash and rinse spray systems made of type 304 stainless steel pipe threaded into cast hub assemblies. Upper and lower wash and rinse spray assemblies are removable without the use of tools.

**WASH-** 2 power spinning wash arms above and 2 power spinning wash arms below. On top, each wash arm is designed with 8 nozzles (16 total). On the bottom, each wash arm is designed with 4 slots (8 total). The slots are precision milled for water control and produce a fan spray.

**FINAL RINSE-** 2 power spinning rinse arms above and 2 power spinning wash arms below. On top, each rinse arm is designed with 2 nozzles (4 total). On the bottom, each rinse arm is designed with 4 nozzles (8 total). The nozzles produce a fan spray reducing water consumption, maximizing heat retention.

**DRAIN-** Drain valve externally controlled. Overflow assembly with skimmer cap is removable without the use of tools for drain line inspection. Heater is protected by low water level control.

LTR	DESCRIPTION	SIZE
H1	HOT WATER TO FINAL RINSE - 180° F	1/2 FIPS
H2	HOT WATER TO REMOTE BOOSTER	1/2 FIPS
H3	HOT WATER TO STEAM BOOSTER	1/2 FIPS
H4	HOT WATER TO BUILT IN BOOSTER	1/2 FIPS
S1	STEAM TO TANK	1/2 FIPS
S2	STEAM TO STEAM BOOSTER	1/2 FIPS
D	DRAIN CONNECTION	1 1/2 CU. NOM
R1	CONDENSATE RETURN - OPTIONAL	3/4 IPS
R2	CONDENSATE RETURN - TANK COIL	1/2 FIPS
E1	ELECT. SERVICE - WASHER MTRS. & B.I. BOOSTER	1 HP *
E2	ELECT. SERVICE - REMOTE BOOSTER	6 KW **

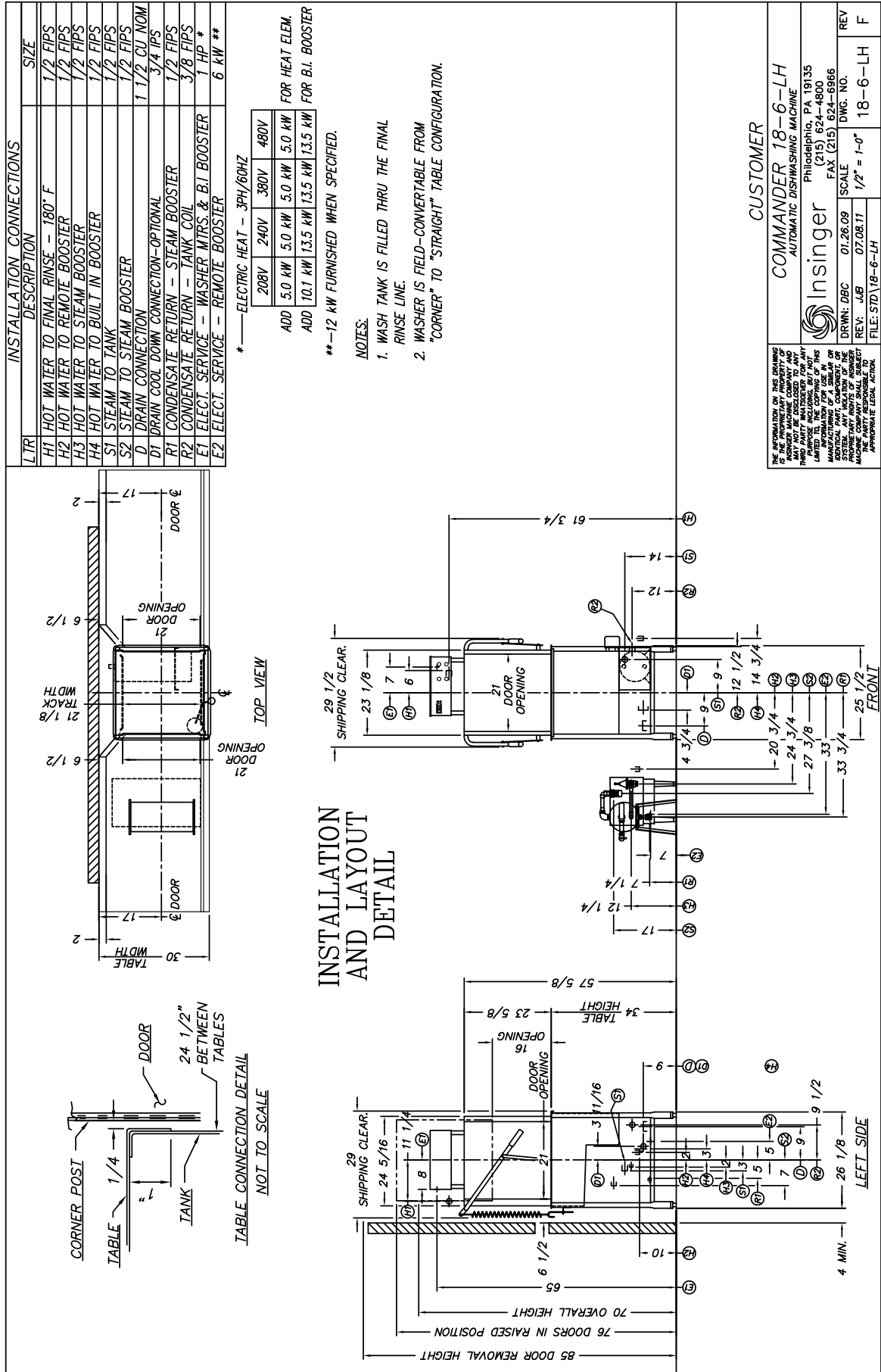
**\* — ELECTRIC HEAT - 3PH/60HZ**

208V	240V	380V	480V
------	------	------	------

ADD 5.0 KW | 5.0 KW | 5.0 KW | 5.0 KW FOR HEAT ELEM.  
 ADD 10.1 KW | 13.5 KW | 13.5 KW | 13.5 KW FOR B.I. BOOSTER

**\*\* — 12 KW FURNISHED WHEN SPECIFIED.**

**NOTES:**  
 1. WASH TANK IS FILLED THRU THE FINAL RINSE LINE.  
 2. WASHER IS FIELD-CONVERTABLE FROM "CORNER" TO "STRAIGHT" TABLE CONFIGURATION.

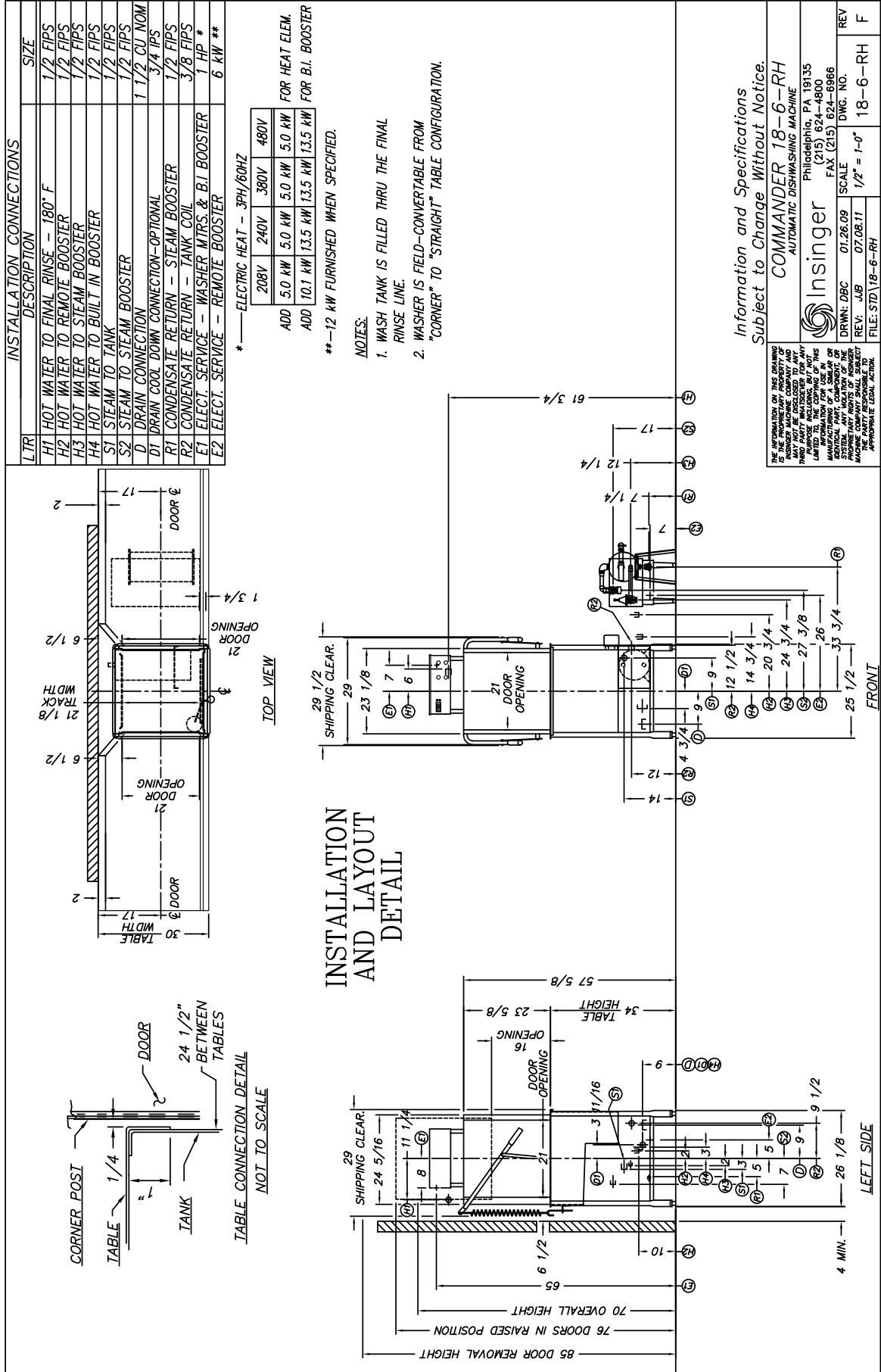


**INSTALLATION AND LAYOUT AND LAYOUT DETAIL**

**CUSTOMER**  
**COMMANDER 18-6-LH**  
 AUTOMATIC DISHWASHING MACHINE  
**Insinger** Philadelphia, PA 19135  
 (215) 624-4800  
 FAX (215) 624-6966  
 DRWN: DBC 01.26.09 SCALE 1/2" = 1'-0"  
 REV: JJB 07.08.11 1/2" = 1'-0"  
 FILE: STD\18-6-LH

THE INFORMATION ON THIS DRAWING IS THE PROPERTY OF INSINGER MACHINE COMPANY AND IS NOT TO BE REPRODUCED OR TRANSMITTED IN ANY FORM OR BY ANY MEANS, INCLUDING PHOTOCOPYING, RECORDING, OR BY ANY INFORMATION SYSTEM, WITHOUT THE WRITTEN PERMISSION OF INSINGER MACHINE COMPANY. INSINGER MACHINE COMPANY SHALL BE RESPONSIBLE FOR ANY DAMAGES, INCLUDING REASONABLE ATTORNEY'S FEES, ARISING FROM THE USE OF THIS DRAWING. THE INFORMATION ON THIS DRAWING IS SUBJECT TO CHANGE WITHOUT NOTICE AND WITHOUT LIABILITY TO INSINGER MACHINE COMPANY. INSINGER MACHINE COMPANY SHALL BE RESPONSIBLE FOR ANY DAMAGES, INCLUDING REASONABLE ATTORNEY'S FEES, ARISING FROM THE USE OF THIS DRAWING.

Contact Insinger Sales at 800-344-4802 for an Installation Drawing Specific to Your Application  
 This drawing is available on the Insinger Web site at [www.insingermachine.com](http://www.insingermachine.com)



Contact Insinger Sales at 800-344-4802 for an Installation Drawing Specific to Your Application  
 This drawing is available on the Insinger Web site at [www.insingermachine.com](http://www.insingermachine.com)