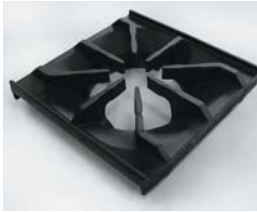


Model Number
 IHPA-1-12
 IHPA-2-24
 IHPA-3-36
 IHPA-4-48



Two rings of flame for even cooking no matter the pan size.



Top grate with anti-clogging pilot shield protects the pilot from grease and debris.



Large 5" (127 mm) stainless steel landing ledge for convenient plating.



Durable cast aluminum with a vylox heat protection grip.



IHPA-3-36 shown

OPEN BURNERS - PyroCentric™ 32,000 BTU (9 KW) anti-clogging burner with a 7,000 BTU/hr. (2 KW) low simmer feature. Two rings of flame for even heating.

- Cast iron PyroCentric burners are standard on all IR Series Ranges.
- Burners are anti-clogging and lift-off and separate for easy cleaning.
- No gaskets or screws.
- One standing pilot per burner for instant ignition.

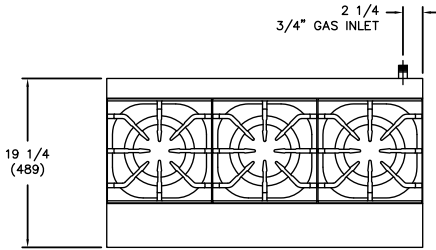
GRATES - Top grates measure 12" x 12" (305 x 305 mm). Sections are easy and safe to lift-off for cleaning.

- Grates have a cast-in bowl that directs heat upward.
- Anti-clogging pilot is designed into the grate to shield the pilots from grease and debris.
- Pots slide easily from section to section and onto landing ledge.
- Grates are cast iron for a long service life.

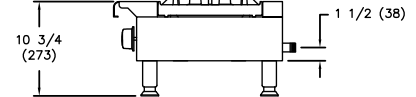
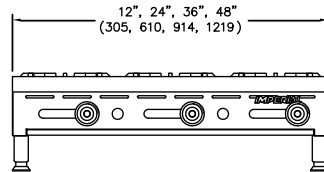
EXTERIOR FEATURES - Stainless steel front, sides and landing ledge for cleanability and professional look.

- Welded and polished stainless steel seams.
- Range Match profile when placed on a refrigerated base or equipment stand.
- Large 5" (127 mm) stainless steel landing ledge is ideal for plating.
- Control knobs are durable cast aluminum with a vylox have a heat protection grip.
- Full width, removable crumb tray for easy cleaning.
- 4" (102 mm) heavy duty legs with adjustable feet.
- One year parts and labor warranty.





IHPA-3-36



GAS HOT PLATES - 19-1/4" (489 MM) DEPTH

TOP	WIDTH	MODEL	OPEN BURNERS	GAS OUTPUT BTU	(KW)	SHIP WEIGHT (KG)	LBS
	12" (305 mm)	IHPA-1-12	1	32,000	(9)	(21)	45
	24" (610 mm)	IHPA-2-24	2	64,000	(19)	(37)	80
	36" (914 mm)	IHPA-3-36	3	96,000	(28)	(53)	115
	48" (1219 mm)	IHPA-4-48	4	128,000	(38)	(64)	140

Measurements in () are metric equivalents.

NOTE:

Models IHPA-2-12, IHPA-4-24, IHPA-6-36, IHPA-8-48 have a double row of open burners and measure 31-3/8" d (797 mm) are shown on page C-2.

MODEL	DIMENSIONS	CRATED DIMENSIONS
IHPA-1-12	12" w x 19-1/4" d x 10-3/4" h (305 x 489 x 273 mm)	14-1/2" w x 22" d x 12" h (368 x 559 x 305 mm)
IHPA-2-24	24" w x 19-1/4" d x 10-3/4" h (305 x 489 x 273 mm)	26-1/2" w x 22" d x 12" h (3673 x 559 x 305 mm)
IHPA-3-36	36" w x 19-1/4" d x 10-3/4" h (914 x 489 x 273 mm)	38-1/2" w x 22" d x 12" h (978 x 559 x 305 mm)
IHPA-4-48	48" w x 19-1/4" d x 10-3/4" h (1219 x 489 x 273 mm)	50-1/2" w x 22" d x 12" h (1283 x 559 x 305 mm)

MANIFOLD PRESSURE	MANIFOLD SIZE
NATURAL GAS	PROPANE GAS
5.0" W.C.	10.0" W.C.
3/4" (19 mm)	

Specify elevation, if over 2,000 ft.

CLEARANCE REQUIREMENTS

Provide 0" clearance from non-combustible surfaces and 8" (203 mm) from combustible surfaces.

OPTIONS AND ACCESSORIES

- Stainless steel equipment stands
- 6" (152 mm) casters for equipment stands
- 10" (254 mm) stainless steel wok ring
- Saute burner head, interchangeable
- Wok burner head, interchangeable
- Stainless steel wok ring
- Gas shut off valve 3/4" N.P.T
- Quick disconnect and flexible gas hose 3/4" N.P.T

