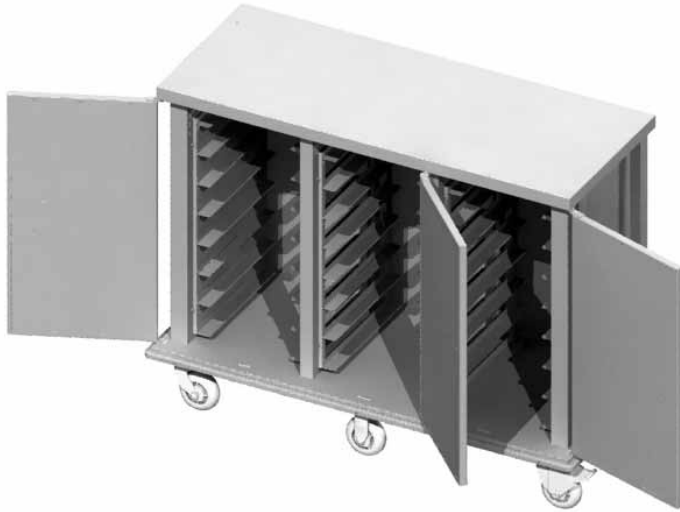


JOB \_\_\_\_\_ ITEM # \_\_\_\_\_ QTY # \_\_\_\_\_

**MODEL NUMBER**

- |                                 |                                 |
|---------------------------------|---------------------------------|
| <input type="checkbox"/> TQM1-L | <input type="checkbox"/> TQM1-N |
| <input type="checkbox"/> TQM2-L | <input type="checkbox"/> TQM2-N |
|                                 | <input type="checkbox"/> TQM3-N |



TQM3-N24-1622

These tray transport carts are designed for heavy duty usage. They include a number of features as standard so as to ensure durability and convenient operation. The "L" profile carts accept two trays per level to permit minimizing overall height; whereas the "N" profile carts accept only one tray per level to minimize overall depth.

**CABINET & BASE**

The cabinet is fabricated of heavy gauge stainless steel, reinforced with box and channel shapes for extra strength. An all welded stainless steel base frame provides firm support for the cabinet as well as for the casters and assures rigidity for the entire assembly. The rear of the cabinet is vented. The base and top cover extend beyond the cabinet as extra protection. The base is fitted with a full perimeter wrap-around bumper. Interior compartment bottom is easily cleanable with no protrusions or obstructions. Vertical, recessed pull handles are mounted on both ends. A menu-card clip is mounted at one end.

**DOORS**

Each bank is fitted with a full length, double pan insulated door. Doors are insulated with one inch thick polystyrene sheet. The doors swing 270° (except the center door on three bank carts, which swings 180°). All doors are equipped with heavy-duty hinges, recessed stainless steel handle, bottom-mounted door catch and a hold-open device.

**TRAY SLIDES**

Each compartment is fitted with stainless steel tray slides welded to stainless steel standards, forming removable ladder assemblies, which are securely mounted to minimize noise and vibration. The tray slides have rounded corners and are mounted 4 3/4" on center.

**CASTERS**

One bank carts are mounted on standard, four 6" diameter, heavy duty, casters with non-marking tires. Two casters are swivel and are equipped with brakes. Two casters are rigid. Two and three bank carts have six 6" casters, four swivel (two with brakes) and two rigid (mounted at center).

**(L) LOW PROFILE**

**ONE BANK**

Model #	Width	Depth	Height
TQM1-L16-1219	31-5/8"	28-1/4"	50"
TQM1-L16-1222	34-5/8"	28-1/4"	50"
TQM1-L16-1418	30-5/8"	32-1/4"	50"
TQM1-L16-1520	33-1/8"	34-3/4"	50"
TQM1-L20-1219	31-5/8"	28-1/4"	59-1/2"
TQM1-L20-1222	34-5/8"	28-1/4"	59-1/2"
TQM1-L20-1418	30-5/8"	32-1/4"	59-1/2"
TQM1-L20-1520	33-1/8"	34-3/4"	59-1/2"

Approximate shipping weight - 220lbs.

**TWO BANK**

Model #	Width	Depth	Height
TQM2-L28-1219	54-1/4"	28-1/4"	45-1/2"
TQM2-L28-1222	60-1/4"	28-1/4"	45-1/2"
TQM2-L28-1418	52-1/4"	32-1/4"	45-1/2"
TQM2-L28-1520	57-1/4"	34-3/4"	45-1/2"
TQM2-L32-1219	54-1/4"	28-1/4"	50"
TQM2-L32-1222	60-1/4"	28-1/4"	50"
TQM2-L32-1418	52-1/4"	32-1/4"	50"
TQM2-L32-1520	57-1/4"	34-3/4"	50"
TQM2-L36-1219	54-1/4"	28-1/4"	54-3/4"
TQM2-L36-1222	60-1/4"	28-1/4"	54-3/4"
TQM2-L36-1418	52-1/4"	32-1/4"	54-3/4"
TQM2-L36-1520	57-1/4"	34-3/4"	50-3/4"

Approximate shipping weight - 315lbs.

**OPTIONS / ACCESSORIES**

- S/S Top Rail (add 2" to height)
- Top Mounted Transport Latch (1 per door)
- Bottom Creased to Center Drain Hole (closeable)
- Heavy Duty 8x2 Casters\*
- Vertical Corner Bumpers
- Tow Hitch

\* Casters: Add 2" to height. Not available on TQM1-N8 and TQM1-N10 models.

Additional tray sizes are available

All dimensions are approximate. Please contact factory for actual dimensions.

Tray sizes vary by manufacturer to insure a proper fit a tray sample or actual tray dimensions must be provided.

**(N) NARROW PROFILE**

**ONE BANK**

Model #	Width	Depth	Height
TQM1-N8-1219	24-5/8"	25-1/2"	50"
TQM1-N8-1222	24-5/8"	27"	50"
TQM1-N8-1418	26-5/8"	25-1/2"	50"
TQM1-N8-1520	27-7/8"	25-1/2"	50"
TQM1-N8-1622	28-5/8"	27"	50"
TQM1-N10-1219	20-5/8"	25-1/2"	59-1/2"
TQM1-N10-1222	24-5/8"	27"	59-1/2"
TQM1-N10-1418	26-5/8"	25-1/2"	59-1/2"
TQM1-N10-1520	27-7/8"	25-1/2"	59-1/2"
TQM1-N10-1622	28-5/8"	27"	59-1/2"

Approximate shipping weight - 190lbs.

**TWO BANK**

Model #	Width	Depth	Height
TQM2-N16-1219	40-1/4"	25-1/2"	50"
TQM2-N16-1222	40-1/4"	27"	50"
TQM2-N16-1418	44-1/4"	25-1/2"	50"
TQM2-N16-1520	46-3/4"	25-1/2"	50"
TQM2-N16-1622	48-1/4"	27"	50"
TQM2-N18-1219	40-1/4"	25-1/2"	50-3/4"
TQM2-N18-1222	40-1/4"	27"	50-3/4"
TQM2-N18-1418	44-1/4"	25-1/2"	50-3/4"
TQM2-N18-1520	46-3/4"	25-1/2"	50-3/4"
TQM2-N18-1622	48-1/4"	27"	50-3/4"
TQM2-N20-1219	40-1/4"	25-1/2"	59-1/2"
TQM2-N20-1222	40-1/4"	27"	59-1/2"
TQM2-N20-1418	44-1/4"	25-1/2"	59-1/2"
TQM2-N20-1520	46-3/4"	25-1/2"	59-1/2"
TQM2-N20-1622	48-1/4"	27"	59-1/2"

Approximate shipping weight - 245lbs.

**THREE BANK**

Model #	Width	Depth	Height
TQM3-N24-1219	54-7/8"	26-3/4"	50"
TQM3-N24-1222	54-7/8"	28-1/4"	50"
TQM3-N24-1418	60-7/8"	26-3/4"	50"
TQM3-N24-1520	64-5/8"	26-3/4"	50"
TQM3-N24-1622	66-7/8"	28-1/4"	50"
TQM3-N27-1219	54-7/8"	26-3/4"	54-3/4"
TQM3-N27-1222	54-7/8"	28-1/4"	54-3/4"
TQM3-N27-1418	60-7/8"	26-3/4"	54-3/4"
TQM3-N27-1520	64-5/8"	26-3/4"	54-3/4"
TQM3-N27-1622	66-7/8"	28-1/4"	53-3/4"

Approximate shipping weight - 320lbs.

**F-13 SPEC**

**PIPER PRODUCTS**  
**BUILT TO LAST**  
[www.piperonline.net](http://www.piperonline.net)

300 S. 84th Avenue  
 Wausau, WI 54401  
 Phone: 800-544-3057  
 Fax: 715-842-3125

**LIMITED WARRANTY:** PIPER PRODUCTS warrants to the original purchaser parts and labor for a period of twelve (12) months from the date of purchase. See manufacturer's complete warranty for details.

It is our policy to build equipment which is design certified by companies that have been accredited at the Federal Level by the Occupational Safety and Health Agency (OSHA) and ANSI as a National Recognized Testing Laboratory. These companies include CSA International, Underwriters Laboratories, and the National Sanitation Foundation. However, a continuing program of product improvement makes it necessary to submit new models to the agencies as they are developed. Consequently, all models may not bear the appropriate labels at all times.

We reserve the right to change specifications and product design without notice. Such revisions do not entitle buyer to corresponding changes, improvements, additions or replacements for previously purchased equipment. Information is not for design purposes.