



ITEM #: \_\_\_\_\_ QTY: \_\_\_\_\_  
 MODEL #: \_\_\_\_\_  
 PROJECT NAME: \_\_\_\_\_

121817

3601 S. Banker St. Effingham, IL 62401 • P.O. BOX 609 • Ph: (888) 431-2667 • Fax: (800) 433-2667

## **"EUBDS-SL" SLIM-LINE UNDERBAR DUMP SINK**

### **FEATURES:**

- FABRICATED SINK BOWL: 10" X 14" X 6" DEEP
- STAINLESS STEEL LEGS AND BRACING WITH ADJUSTABLE BULLET FEET
- 4" ON-CENTER SPLASH MOUNT FAUCET HOLES

### **MATERIAL:**

- TOP: 18GA 300 SERIES STAINLESS STEEL
- BRACING: STAINLESS STEEL
- LEGS: STAINLESS STEEL
- FEET: PLASTIC

### **CONSTRUCTION:**

- TOP: STAINLESS STEEL TOPS ARE TIG WELDED, EXPOSED WELDS ARE POLISHED TO MATCH ADJACENT SURFACE.



EUBDS-1014-SL

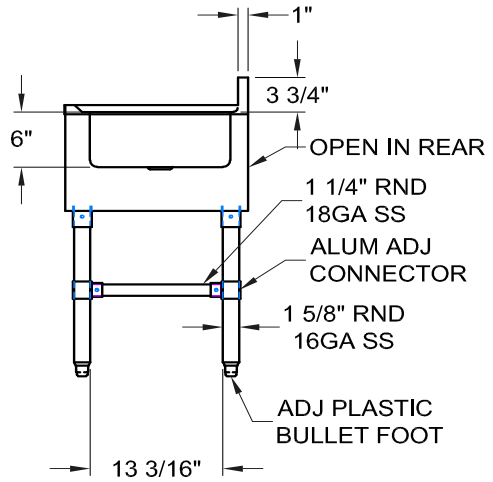
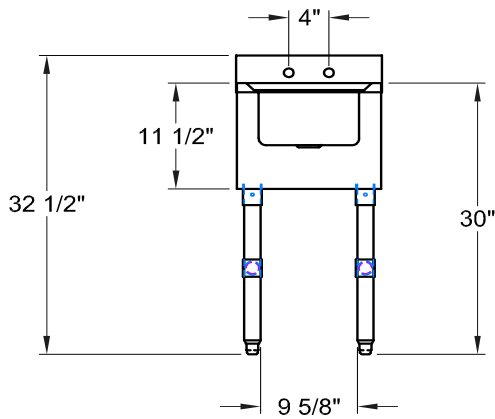
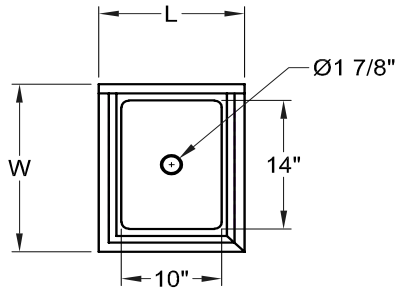
### **SLIM-LINE UNDERBAR DUMP SINK**

MODEL #	QTY
EUBDS-1014-SL	

### **OPTIONAL ACCESSORIES**

MODEL #	QTY
STAINLESS STEEL LEGS	

# DETAILED SPECIFICATIONS



## SLIM-LINE UNDERBAR DUMP SINK

MODEL #	LENGTH	WIDTH	HEIGHT	WT. (LBS)
EUBDS-1014-SL	14"	18"	30"	41

WEIGHTS ARE SUBJECT TO ADDITIONAL PACKAGING

SOME UNITS SHIP UNASSEMBLED FOR REDUCED SHIPPING COST. ALL DIMENSIONS ARE TYPICAL. TOLERANCE +/- .500"  
 John Boos & Co. is constantly engaged in a program of improving products and therefore reserves the right to change specifications without prior notice.



3601 S. Banker St. • Effingham, IL 62401 • PO BOX 609 • quotes@johnboos.com

062317

41



[www.johnboos.com](http://www.johnboos.com)