



**John
BOOS**
Since 1887

ITEM #: _____ QTY: _____
 MODEL #: _____
 PROJECT NAME: _____

073118

3601 S. Banker St. Effingham, IL 62401 • P.O. BOX 609 • Ph: (888) 431-2667 • Fax: (800) 433-2667

"JDTS" SOILED STRAIGHT DISHTABLES PRO-BOWL
16GA STAINLESS STEEL TOP AND STAINLESS STEEL BASE



FEATURES:

- STANDARD 16 GAUGE TYPE 300 STAINLESS STEEL WITH #4 POLISH, SATIN FINISH
- FULL LENGTH **10" HIGH BOXED BACKSPLASH**, WITH 2" RETURN TO WALL AT 45 DEGREE AND 1/2" TURNED DOWN REAR LIP
- 1" FAUCET HOLES IN BACKSPLASH
- ALL OUTSIDE CORNERS OF ASSEMBLY ARE BULLNOSED TO PROVIDE SAFE, CLEAN, AND POLISHED EDGE
- STANDARD 1-5/8" DIAMETER STAINLESS STEEL LEGS



CONSTRUCTION:

- TOP: STAINLESS STEEL TOPS ARE TIG WELDED, EXPOSED WELDS ARE POLISHED TO MATCH ADJACENT SURFACE.

MATERIAL:

- TOP & BOWLS: 16 GAUGE STAINLESS STEEL TYPE 300 STAINLESS STEEL WITH #4 POLISH, SATIN FINISH
- LEGS: 1-5/8" ROUND O.D. 16 GAUGE STAINLESS STEEL
- BRACING: 1-1/4" ROUND O.D. 16 GAUGE STAINLESS STEEL TYPE 300 STAINLESS STEEL WITH #4 POLISH, SATIN FINISH
- GUSSETS: STAINLESS STEEL
- FEET: 1" ADJUSTABLE STAINLESS STEEL BULLET FEET

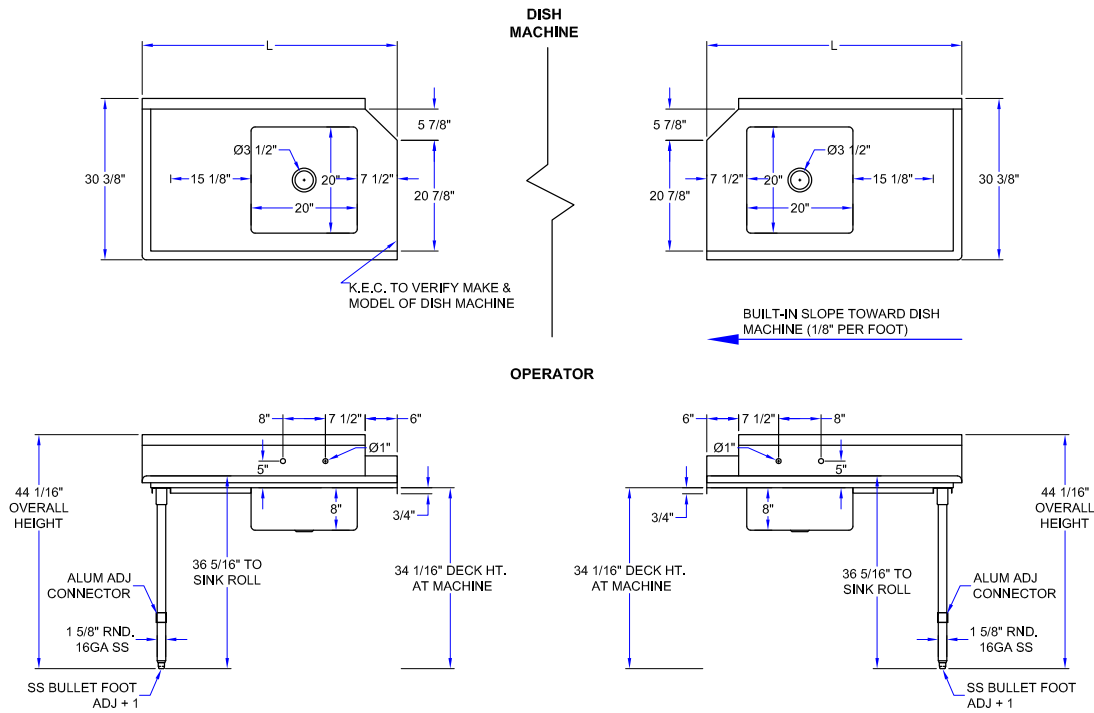
16 GAUGE - SOILED STRAIGHT DISHTABLES PRO-BOWL

MODEL #	QTY
JDTS-20-36L	
JDTS-20-36R	
JDTS-20-48L	
JDTS-20-48R	
JDTS-20-60L	
JDTS-20-60R	
JDTS-20-72L	
JDTS-20-72R	

OPTIONAL ACCESSORIES

DESCRIPTION	MODEL #	QTY
ADD-A-FAUCET		
PRE-RINSE-UNITS		
LEVEL WASTE		
OVER SHELF		
UNDER SHELF		
POT RACK		

DETAILED SPECIFICATIONS



- UNITS 7 FT. AND LARGER ARE FURNISHED WITH SIX LEGS.

16 GAUGE - SOILED STRAIGHT DISHTABLES PRO-BOWL

L	MODEL #	WT. (LBS)
36"	JDTS-20-36L	45
36"	JDTS-20-36R	45
48"	JDTS-20-48L	60
48"	JDTS-20-48R	60
60"	JDTS-20-60L	70
60"	JDTS-20-60R	70
72"	JDTS-20-72L	85
72"	JDTS-20-72R	85

SOME UNITS SHIP UNASSEMBLED FOR REDUCED SHIPPING COST. ALL DIMENSIONS ARE TYPICAL. TOLERANCE +/- .500"
 John Boos & Co. is constantly engaged in a program of improving products and therefore reserves the right to change specifications without prior notice.

