



**John  
BOOS**  
Since 1887

ITEM #: \_\_\_\_\_ QTY: \_\_\_\_\_  
 MODEL #: \_\_\_\_\_  
 PROJECT NAME: \_\_\_\_\_

121917

3601 S. Banker St. Effingham, IL 62401 • P.O. BOX 609 • Ph: (888) 431-2667 • Fax: (800) 433-2667



## **"SNS" MAPLE TOP WORK TABLES**

### **1-3/4" THICK HARD ROCK MAPLE FLAT TOP W/ STAINLESS STEEL BASE & ADJUSTABLE UNDERSHELF**

#### **FEATURES:**

- 1-3/4" THICK HARD MAPLE TOP, STYLE "SC" FLAT TOP
- MAPLE TOP W/ OIL FINISH W/ OPTIONAL VARNIQUE FINISH
- STAINLESS STEEL BASE AND UNDERSHELF
- UNDERSHELF IS ADJUSTABLE
- ADJUSTABLE BULLET FEET
- SHIPPED KNOCKED-DOWN, EASY-TO-ASSEMBLE
- ALL MODELS ARE NSF CERTIFIED

#### **MATERIAL:**

- TOP: NORTHERN HARD ROCK MAPLE
- LEGS: 1-5/8" ROUND O.D. 16 GAUGE TYPE 300 TUBULAR STAINLESS STEEL W/ #4 POLISH, SATIN FINISH
- SHELF: 18 GAUGE TYPE 300 TUBULAR STAINLESS STEEL W/#4 POLISH, SATIN FINISH
- GUSSETS: STAINLESS STEEL
- FEET: 1" ADJUSTABLE STAINLESS STEEL

#### **OPTIONAL ACCESSORIES**

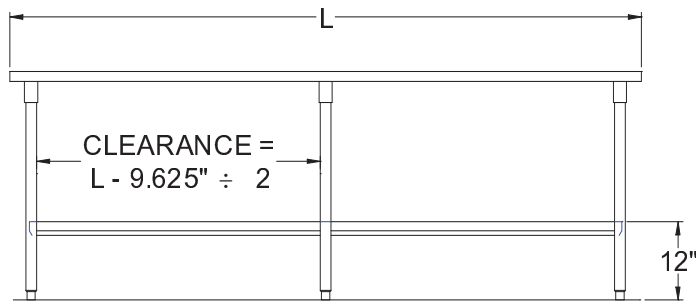
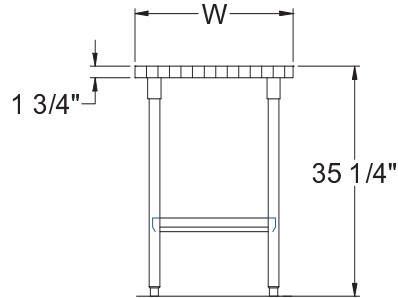
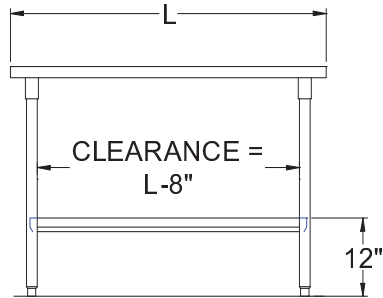
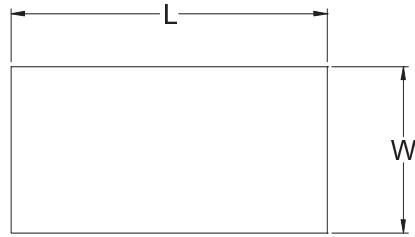
DESCRIPTION	MODEL	QTY
STAINLESS STEEL FEET		
DRAWER		
DRAWER LOCK		
ADJUSTABLE SHELF		
CASTERS		
OVERSHELVES		
POT RACK		



#### **MAPLE TOP WORK TABLES**

24" WIDE	QTY	30" WIDE	QTY	36" WIDE	QTY
SNS01		SNS07		SNS13	
SNS02		SNS08		SNS14	
SNS03		SNS09		SNS15	
SNS04		SNS10		SNS16	
SNS04A		SNS10A		SNS16A	
SNS05		SNS11		SNS17	
SNS05A		SNS11A		SNS17A	
SNS06		SNS12		SNS18	

# DETAILED SPECIFICATIONS



- UNITS 7 FT. AND LARGER ARE FURNISHED WITH SIX LEGS.
- FINISHED SIZE OF UNDERSHELF.  
 SHELF LENGTH = LENGTH MINUS 4.875"  
 SHELF WIDTH = WIDTH MINUS 4.25".

## MAPLE TOP WORK TABLES

LENGTH	24" WIDE	WT. (LBS)	30" WIDE	WT. (LBS)	36" WIDE	WT. (LBS)
36"	SNS01	77	SNS07	90	SNS13	102
48"	SNS02	95	SNS08	116	SNS14	132
60"	SNS03	114	SNS09	140	SNS15	159
72"	SNS04	138	SNS10	164	SNS16	187
84"	SNS04A	162	SNS10A	198	SNS16A	225
96"	SNS05	186	SNS11	223	SNS17	254
108"	SNS05A	200	SNS11A	244	SNS17A	278
120"	SNS06	220	SNS12	268	SNS18	306

SOME UNITS SHIP UNASSEMBLED FOR REDUCED SHIPPING COST. ALL DIMENSIONS ARE TYPICAL. TOLERANCE +/- .500"

John Boos & Co. is constantly engaged in a program of improving products and therefore reserves the right to change specifications without prior notice.



3601 S. Banker St. • Effingham, IL 62401 • PO BOX 609 • quotes@johnboos.com

[www.johnboos.com](http://www.johnboos.com)