



"TNS" Maple Top Work Tables

w/ 2 1/4" thick Hard Rock Maple Top
w/ Stainless Steel Base and Undershef



AUTOQUOTES



2 1/4" MAPLE TOP w/ UNDERSHELF					
24"WIDE	Qty	30"WIDE	Qty	36"WIDE	Qty
TNS01		TNS07		TNS13	
TNS02		TNS08		TNS14	
TNS03		TNS09		TNS15	
TNS04		TNS10		TNS16	
TNS04A		TNS10A		TNS16A	
TNS05		TNS11		TNS17	
TNS05A		TNS11A		TNS17A	
TNS06		TNS12		TNS18	

FEATURES:

- * 2 1/4" Thick Hard Rock Maple Top
top style "BKSC" flat top
- * Maple top is finished with penetrating oil
with optional natural clear Varnique Finish
- * Stainless Steel Base and Undershef,
Type 300 stainless steel with # 4 polish, satin finish
- * Undershef is secured in a fixed position, 12" above floor
- * Adjustable bullet feet
- * Shipped knocked-down, easy - to - assemble
- * Optional drawers, casters, pot racks, etc. available
- * All models are approved by the National Sanitation Foundation

MATERIAL:

- Top: Laminated Hard Rock Maple
 Shelf: 18 gauge type 300 stainless steel, # 4 polish, satin finish.
 ** 6 ft. table only, 16 gauge type 300 stainless steel
 # 4 polish, satin finish
 Legs: 1 5/8" Round O.D., 16 gauge type 300 tubular stainless steel
 # 4 polish, satin finish
 Gussets: Stainless Steel
 Feet: 1" adjustable stainless steel bullet feet

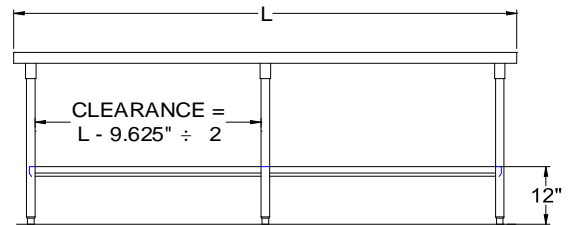
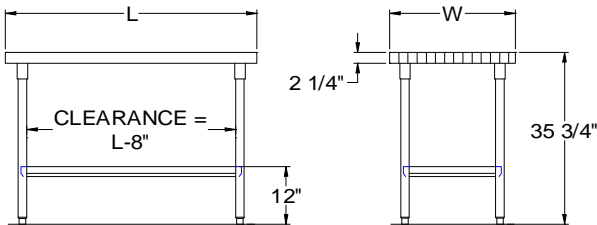
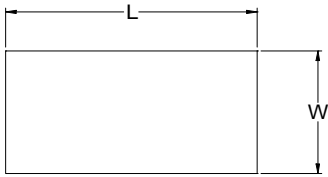
OPTIONAL ACCESSORIES

	MODEL #	Qty
STAINLESS STAIN FEET		
DRAWER		
DRAWER LOCK		
ADJUSTABLE SHELF		
CASTERS		
OVERSHELVES		
POT RACK		

John Boos & Co

3601 S. Banker Street - Effingham, IL 62401
 Phone: 217-347-7701 - Fax: 217-347-7705
 Email: sales@johnboos.com - Web-site: www. johnboos.com

DETAILED SPECIFICATIONS



All units ship unassembled for reduced shipping cost.
 Units 7 ft. and larger are furnished with six legs.
 All dimensions are typical.
 Tolerance +/- .500".

Finished size of undershelf.
 Shelf length = length minus 4.875"
 Shelf width = width minus 4.25"

2 1/4" MAPLE TOP & UNDERSHELF

L	24" WIDE	WT.	30" WIDE	WT.	36" WIDE	WT.
36	TNS01	84	TNS07	91	TNS13	118
48	TNS02	106	TNS08	114	TNS14	151
60	TNS03	129	TNS09	138	TNS15	185
72	TNS04	151	TNS10	161	TNS16	226
84	TNS04A	173	TNS10A	189	TNS16A	257
96	TNS05	195	TNS11	217	TNS17	287
108	TNS05A	222	TNS11A	241	TNS17A	325
120	TNS06	248	TNS12	264	TNS18	363

John Boos & Co

3601 S. Banker Str - Effingham, IL 62401 Phone: 217-347-7701 - Fax: 217-347-7705
 Email: sales@johnboos.com - Web-site: www.johnboos.com



July 2013

John Boos is constantly engaged in a program of improving products and therefore reserves the right to change specification without prior notice