

FD-1001M_H-C

MODULAR CUBELET ICE MACHINE

SLIM-LINE DISPENSER SERIES

Item # _____

Project: _____

Qty: _____

*AutoCad available on KCL

FD-1001M_H-C

8/09

Item # 13242

CUBELET DIMENSIONS

W x D x H

FD-1001M_H-C
22 x 24 x 26





FD-1001MAH-C

Air-Cooled

Shown on an optional
Lancer 22" Dispenser

FD-1001MRH-C

Remote Air-Cooled

- Up to 940 lbs. of ice production per 24 hours
- Durable stainless steel exterior
- Protected by *HoshiGuard* Antimicrobial Agent 
- Advanced CleanCycle I2® Design 
- Flushes every 2 hours to remove sediment and improve efficiency
- Produces ideal chewable ice
- Dispenser ready / infrared bin control
- R-404A Refrigerant



Warranty

Valid in United States, Canada, Puerto Rico, & U.S. Territories. Contact factory for warranty in other countries.

Two Year - Parts & Labor on entire machine.

Five Year - Parts on compressor, air-cooled condenser coil.



Hoshizaki

FD-100IM_H-C CUBELET ICE MACHINE SLIM-LINE DISPENSER SERIES

DIMENSIONS
W x D x H

FD-1001MAH-C
22 x 24 x 26

FD-1001MRH-C
22 x 24 x 26

- Air-cooled
- Remote Air-cooled

AIR-COOLED

| Water Temp ° F. | 50° | 70° | 90° |
|-----------------|-----|-----|------------|
| Air Temp ° F. | 70° | 890 | 855 |
| | 80° | 820 | 790 |
| | 90° | 725 | 695 |

REMOTE AIR-COOLED

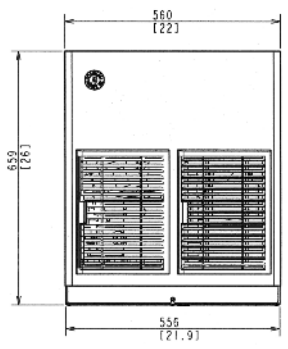
| Water Temp ° F. | 50° | 70° | 90° |
|-----------------|-----|-----|------------|
| Air Temp ° F. | 70° | 930 | 895 |
| | 80° | 825 | 790 |
| | 90° | 730 | 720 |

UTILITY CONSUMPTION

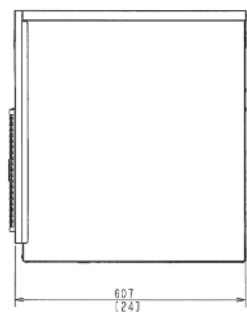
| Model Number | KWH per 100 LBS. 90/70 | Potable Water Gal. per 100 lbs. |
|--------------|------------------------|---------------------------------|
| FD-1001MAH-C | 4.8 | 12.0 |
| FD-1001MRH-C | 4.8 | 12.0 |

SPECIFICATIONS

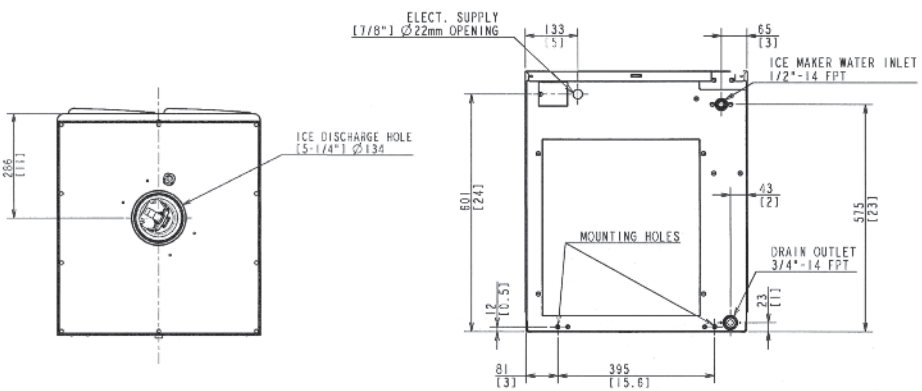
| Model Number | Condenser | Amperage | Min. Circuit Ampacity | Shipping Weight |
|--------------|------------|----------|-----------------------|-----------------|
| FD-1001MAH-C | Air-Cooled | 8.1 | 15 | 205 lbs. |
| FD-1001MRH-C | Air-Cooled | 10.2 | 15 | 205 lbs. |



FRONT VIEW

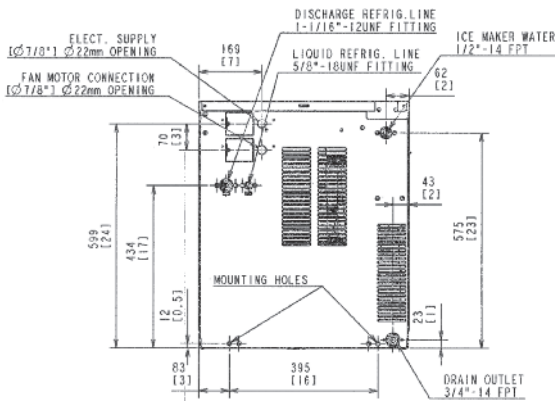


SIDE VIEW



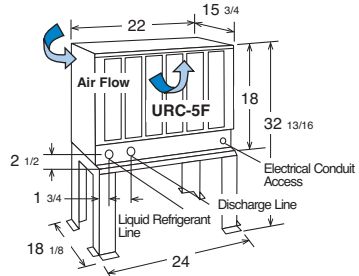
ICE DROP ZONE

AIR-COOLED UNIT



REMOTE AIR-COOLED UNIT

URC-5F Remote Condenser (Sold Separately)
Voltage supply for the URC Remote Condenser is supplied from the Ice Maker. No additional circuit is required.



Pre-Charged Tubing Kits (Sold Separately)
20' R404-2046-2
35' R404-3546-2

ELECTRICAL & PLUMBING/FD-100IM_H-C

- 208-230V/60/1 (3 wire with dedicated neutral for 115V)
- 1/2" OD copper or equivalent independent potable water supply
- 3/4" FPT independent drain connection

OPERATING LIMITS

- Ambient Temp Range 45 - 100°F
- Water Temp Range 45 - 90°F
- Water Pressure 10 - 113psig
- Voltage Range 187 - 253V

SERVICE

- Panels easily removed and all components accessible for service.
- Removable/cleanable air filter. (Air-Cooled model only)



© HOSHIZAKI AMERICA, INC.

618 Hwy. 74 S., Peachtree City, GA 30269

TEL 1-800-438-6087

FAX 1-800-345-1325

www.hoshizaki.com

Printed in U.S.A.

