

HUF40/68A-D

UNDERCOUNTER FREEZERS WITH DRAWERS

TEMPGUARD® Self-Contained Undercounter Freezers with EverCheck® Controls

Item # _____

Project: _____

Qty: _____

*AutoCad available on KCL

HUF40/68A-D

5/08

Item # 13188

HUF40A-D DIMENSIONS

W x D x H

40.25 x 32.3 x 33.9*

*with 4" casters

HUF68A-D DIMENSIONS

W x D x H

68 x 32.3 x 33.9*

*with 4" casters

HUF40A-D

Shown

**HUF68A-D**

Shown



- Stainless steel interior and exterior top, front, sides and bottom with galvanized steel back for long life, durability and easy maintenance
- Cabinet drawer perimeter heater provides condensation control in high humidity environments and is equipped with a back-up should the primary heater fail
- Cabinet and drawer mullion are insulated with 2³/₈" CFC free, foamed-in-place polyurethane
- Each drawer accommodates (2) 12" x 20" x 6" deep pans (pans not included) and features full extension drawer slides
- Drawer fronts are constructed of high-grade 300 series stainless steel inside and out
- The drawer module frame and drawer slides are constructed of 14 gauge stainless steel for superior durability
- Snap-in magnetic drawer gaskets are durable and easily removed for cleaning
- Delrin rollers, used in combination with the stainless steel slides, provide for smooth, quiet drawer operation without metal to metal contact
- Drawers have a 250 lb. dynamic load rating
- Lifetime warranty on drawer slides
- 4" heavy duty casters (2 with brakes) are standard
- High-efficiency refrigeration system is designed with a large capacity condenser and evaporator resulting in lower overall power consumption
- TempGuard's® EverCheck® controls monitor high and low temperatures, high pressure, clean filter and cabinet temperature functions and provide visual alarms to alert operator to possible problems
- Cartridge-style refrigeration system is easily removable from the main unit for ease of service
- Evaporator coil is coated for extended life
- Refrigeration system is equipped with solid state digital controls (Fahrenheit or Celsius display)
- Refrigeration system is designed to maintain proper temperatures with "zero" clearance on ends and at rear
- Defrost cycles are time initiated - temperature terminated and can be set to cycle from one to twelve hours to prevent ice formation and maintain optimum cabinet temperatures
- Removable, cleanable air filter protects condenser and reduces cleaning requirements
- Hot gas condensate evaporator is standard
- Units equipped with 8' - 6" cord and plug
- R-404A Refrigerant with capillary tube controls

**Warranty**

Valid in United States, Canada, Puerto Rico, & U.S. Territories. Contact factory for warranty in other countries.

Two Year - Parts & Labor on entire machine.

Five Year - Parts on: Compressor.



H

hoshizaki

HUF40/68A-D UNDERCOUNTER FREEZERS WITH DRAWERS

DIMENSIONS

W x D x H
HUF40A-D
 40.25" x 32.3" x 33.9"
HUF68A-D
 68" x 32.3" x 33.9"
*with 4" casters

UNDERCOUNTER FREEZERS

- 1 section undercounter freezer
- 2 section undercounter freezer

DIMENSIONS/CAPACITY

| Model # | HUF40A-D | HUF68A-D |
|---------------------------------------|---------------------|----------------------|
| Interior Storage Capacity (CF) | 8.5 ft ³ | 18.8 ft ³ |
| Overall Width | 40.25" | 68" |
| Overall Depth | 32.3" | 32.3" |
| Height (including 4" casters) | 33.9" | 33.9" |
| Drawer Fully Open (in) | 58.1" | 58.1" |
| Drawer Opening Width | N/A | N/A |
| Drawer Height | 9.9" | 9.9" |
| Adjustable Shelves | N/A | N/A |
| Pan Capacity (12" x 20" x 6" DP Pans) | 4 | 8 |
| Crated Shipping Weight | 375 lb | 553 lb |
| Crated Height | 35.5" | 35.5" |
| Crated Width | 44.25" | 72" |
| Crated Depth | 35.5" | 35.5" |

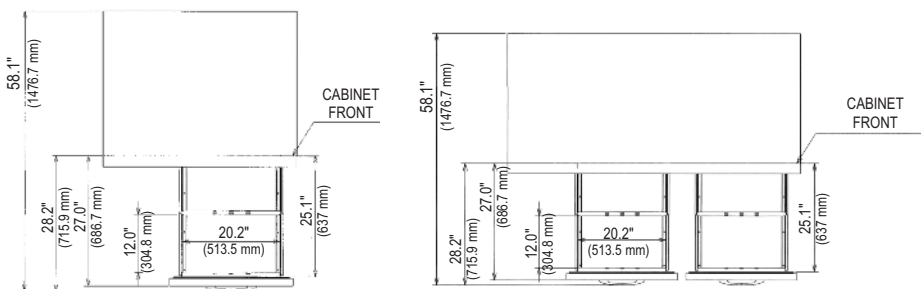
ELECTRICAL & REFRIGERATION DATA

| Model # | HUF40A-D | HUF68A-D |
|--|--------------|--------------|
| Voltage | 115/60/1 | 115/60/1 |
| Amperage | 5.5 | 10.0 |
| HACR Breaker | 15.0 | 15.0 |
| Electrical Connection(NEMA) | 5 - 15P | 5 - 15P |
| *Energy Consumption(kwh/day) | 8.9 | 12.6 |
| * Heat Rejection(BTU/Hr.) | 1267 | 1791 |
| Approximate Nominal Compressor BTU/Hr.(HP) | 1378 (3/8HP) | 2592 (1/2HP) |
| Voltage Range | 104 - 126 | 104 - 126 |
| Ambient Temp. Range | 45° - 100°F | 45° - 100°F |
| Control Setpoint Range | -13° to +19° | -13° to +19° |
| *Refrigerant | R-404A | R-404A |

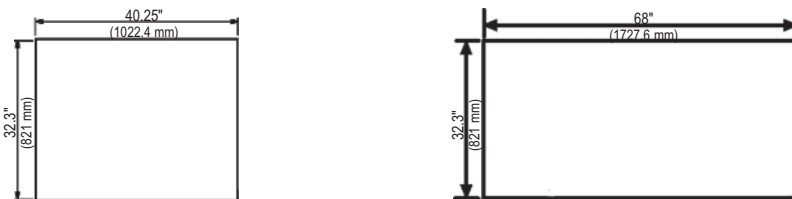
* Based on 100°F ambient cycling at setpoint

OPTIONS

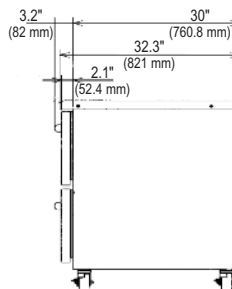
- 1 door in lieu of 2 drawers
- 6" Legs
- 6" Casters
- Stainless steel back
- Drawer adaptor bars
- Bullnose top (front & rear)
- Doors



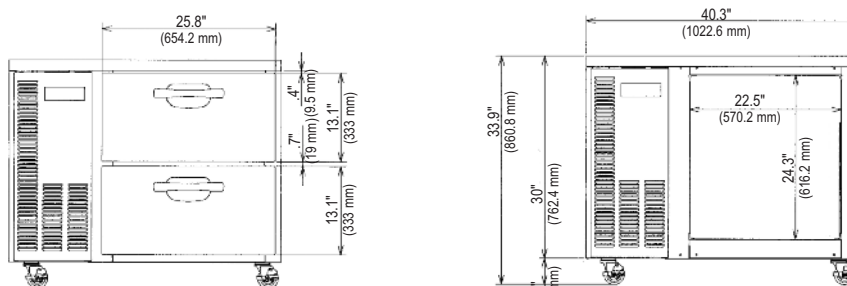
TOP VIEW



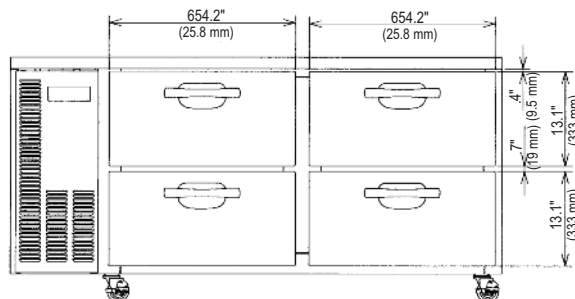
PLAN VIEW



SIDE VIEW (BOTH UNITS)



HUF40A



HUF68A



© HOSHIZAKI AMERICA, INC.

618 Hwy. 74 S., Peachtree City, GA 30269

TEL 1-800-438-6087

FAX 1-800-345-1325

www.hoshizaki.com

Printed in U.S.A.

