

# HWF40/68A-D

## WORKTOP FREEZERS WITH DRAWERS

TEMPGUARD® Self-Contained Worktop Freezers with EverCheck® Controls

Item # \_\_\_\_\_

Project: \_\_\_\_\_

Qty: \_\_\_\_\_

\*AutoCad available on KCL

HWF40/68A-D

5/08

Item # 13190

### HWF40A-D DIMENSIONS

W x D x H

40.25 x 32.3 x 39.9\*

\*with 6" casters

### HWF68A-D DIMENSIONS

W x D x H

68 x 32.3 x 39.9\*

\*with 6" casters

### HWF40A-D

Shown



### HWF68A-D

Shown



- Stainless steel interior and exterior top, front, sides and bottom with galvanized steel back for long life, durability and easy maintenance
- Cabinet drawer perimeter heater provides condensation control in high humidity environments and is equipped with a back-up should the primary heater fail
- Cabinet and drawer mullion are insulated with 2 3/8" CFC free, foamed-in-place polyurethane
- Each drawer accommodates (2) 12" x 20" x 6" deep pans (pans not included) and features full extension drawer slides
- Drawer fronts are constructed of high-grade 300 series stainless steel inside and out
- The drawer module frame and drawer slides are constructed of 14 gauge stainless steel for superior durability
- Snap-in magnetic drawer gaskets are durable and easily removed for cleaning
- Delrin rollers, used in combination with the stainless steel slides provide for smooth, quiet drawer operation without metal to metal contact
- Drawers have a 250 lb. dynamic load rating
- Lifetime warranty on drawer slides
- 6" heavy duty casters (2 with brakes) are standard
- High-efficiency refrigeration system is designed with a large capacity condenser and evaporator resulting in lower overall power consumption.
- TempGuard's® EverCheck® controls monitor high and low temperatures, high pressure, clean filter and cabinet temperature functions and provide visual alarms to alert operator to possible problems
- Cartridge-style refrigeration system is easily removable from the main unit for ease of service
- Evaporator coil is coated for extended life
- Refrigeration system is equipped with solid state digital controls (Fahrenheit or Celsius display)
- Refrigeration system is designed to maintain proper temperatures with "zero" clearance on ends and at rear
- Defrost cycles are time initiated - temperature terminated and can be set to cycle from one to twelve hours to prevent ice formation and maintain optimum cabinet temperatures
- Removable, cleanable air filter protects condenser and reduces cleaning requirements
- Hot gas condensate evaporator is standard
- Units equipped with 8' - 6" cord and plug
- Refrigerant: R-404A with capillary tube controls



### Warranty

Valid in United States, Canada, Puerto Rico, & U.S. Territories. Contact factory for warranty in other countries.

**Two Year** - Parts & Labor on entire machine.

**Five Year** - Parts on: Compressor.



# Hoshizaki

## WORKTOP FREEZERS WITH DRAWERS

### HWF40/68A-D

**DIMENSIONS**  
W x D x H

**HWF40A-D**  
40.25 x 32.3 x 39.9\*

**HWF68A-D**  
68 x 32.3 x 39.9\*  
\*with 6" casters

### WORKTOP FREEZERS

- 1 section worktop freezer
- 2 section worktop freezer

### DIMENSIONS/CAPACITY

Model #	HWF40A-D	HWF68A-D
Interior Storage Capacity (CF)	8.5 ft <sup>3</sup>	18.8 ft <sup>3</sup>
Overall Width	40.25"	68"
Overall Depth	32.3"	32.3"
Height (including 6" casters)	39.9"	39.9"
Drawer Fully Open (in)	58.1"	58.1"
Door Opening Width	N/A	N/A
Drawer Height	9.9"	9.9"
Adjustable Shelves	N/A	N/A
Pan Capacity (12" x 20" x 6" DP Pans)	4	6
Crated Shipping Weight	380 lb	561 lb
Crated Height	40.5"	40.5"
Crated Width	44.25"	72"
Crated Depth	35.5"	35.5"

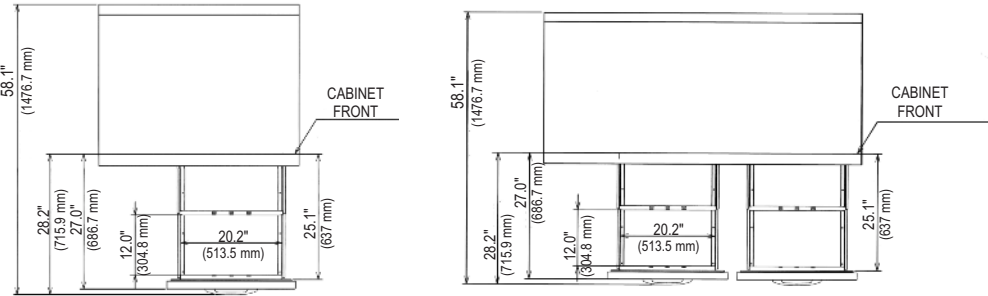
### ELECTRICAL & REFRIGERATION DATA

Model #	HWF40A-D	HWF68A-D
Voltage	115/60/1	115/60/1
Amperage	5.5	10.0
HACR Breaker	15.0	15.0
Electrical Connection(NEMA)	5 - 15P	5 - 15P
*Energy Consumption(kwh/day)	8.9	12.6
* Heat Rejection(BTU/Hr.)	1267	1791
Approximate Nominal Compressor BTU/Hr.(HP)	1378 (3/8HP)	2592 (1/2HP)
Voltage Range	104 - 126	104 - 126
Ambient Temp. Range	45° - 100°F	45° - 100°F
Control Setpoint Range	-13° to +19°F	-13° to +19°F
*Refrigerant	R-404A	R-404A

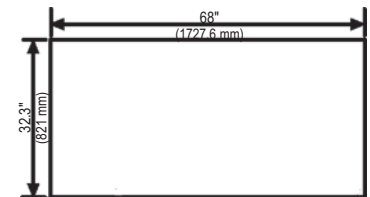
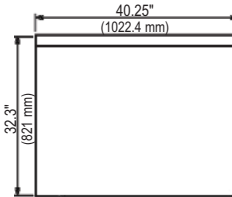
\* Based on 100°F ambient cycling at setpoint

### OPTIONS

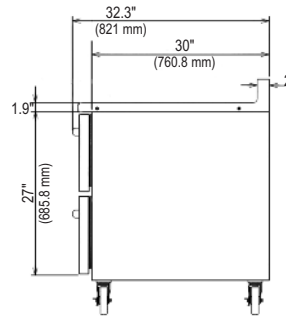
- 6" Legs
- 4" Casters
- Doors
- Stainless steel back
- Drawer adapter bars
- Bullnose top (front & rear)
- (1) Door in lieu of (2) drawers



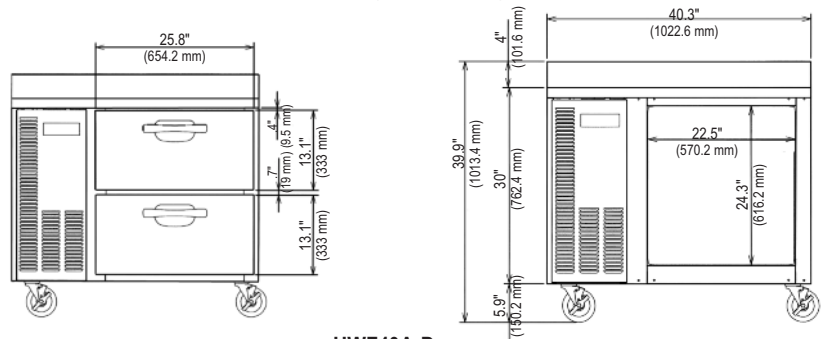
TOP VIEW



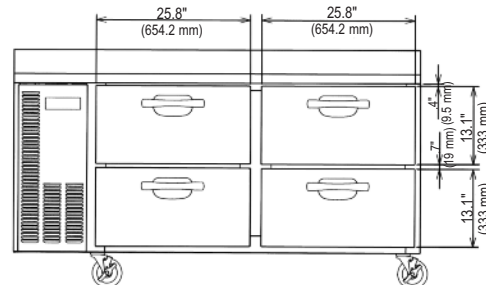
PLAN VIEW



SIDE VIEW (BOTH UNITS)



HWF40A-D



HWF68A-D



© HOSHIZAKI AMERICA, INC.

618 Hwy. 74 S., Peachtree City, GA 30269

TEL 1-800-438-6087

FAX 1-800-345-1325

www.hoshizaki.com

Printed in U.S.A.

