



KMD-410M_H

MODULAR CRESCENT CUBER



KMD-410M_H
04/11/17
Item # 13247


W x D x H
22" x 24" x 24"


KMD-410MAH
Air-Cooled
Shown on an optional
Lancer 22" dispenser

KMD-410MWH
Water-Cooled



Features

- ▶ Individual crescent cube
- ▶ Stainless steel evaporator
- ▶ CycleSaver™ design 

- Up to 440 lbs. of ice production per 24 hours
- Durable stainless steel exterior
- EverCheck™ alert system 
- Removable air filters (Air-cooled model only)
- R-404A Refrigerant

Available on Bins:

B-250PF **BD-500PF/SF** **B-800PF/SF**
B-500PF/SF **B-700PF/SF** **B-900PF/SF**

Top kit may be required. See Bin Spec Sheets.

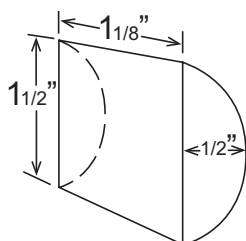
Warranty:

3 Year Parts & Labor on entire machine. 5 Year Parts & Labor on Evaporator. 5 Year Parts on Compressor; air-cooled condenser coil. Valid in United States, Canada, Puerto Rico and U.S. Territories. Contact factory for warranty in other countries.



Condenser	Model	ICE PRODUCTION		Per Cycle		WATER USAGE		ELECTRICAL			Heat Rejection BTU/hr.	Shipping Weight	ENERGY STAR®	
		Air / Water Temp Lbs. per 24 hours	70°/50°F	90°/70°F	Lbs.	Cubes	Potable Gal. per 100 lbs.	Condenser Gal. per 100 lbs.	kWh Used per 100 lbs.	Max. Fuse Size or HACR Circuit Breaker				Amperage
Air-Cooled	KMD-410MAH	415	324	8.5	416	22.6	N/A	5.8	20A	8.0A	115V/60/1	6,000	161 lbs.	
Water-Cooled	KMD-410MWH	440	382	8.2	416	23.2	145	4.3	20A	6.5A	115V/60/1	6,300	163 lbs.	

KM Cube Dimensions*



* approximate size in inches, image not to scale

Operating Limits

- Ambient Temp Range 45 - 100°F
- Water Temp Range 45 - 90°F
- Water Pressure 10 - 113 PSIG
- Voltage Range 104-127V

Service

- Panels easily removed and all components accessible for service.
- For proper air circulation and ease of maintenance/service, allow 6" (15cm) clearance at rear, left side, and top and allow 12" (30cm) clearance at right side for both air-cooled water-cooled models.

Plumbing

- Icemaker Water Supply Line: Minimum 1/4" Nominal ID Copper Water Tubing or Equivalent
- Icemaker Drain Line: Minimum 3/4" Nominal ID Hard Pipe or Equivalent
- Water-Cooled Model (Lines Must Be Independent of Icemaker)
- Condenser Water Supply Line: Minimum 1/4" Nominal ID Copper Water Tubing or Equivalent
- Condenser Drain/Return Line: Minimum 1/4" Nominal ID Hard Pipe (open drain system) or Copper Water Tubing (closed loop system) or Equivalent



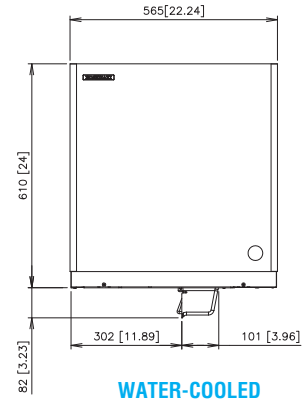
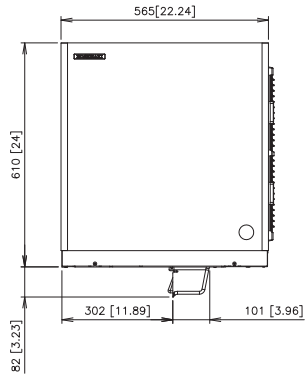
KMD-410M_H

MODULAR CRESCENT CUBER

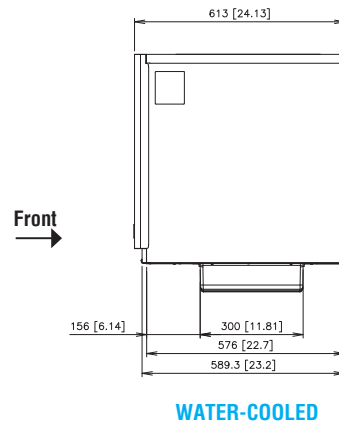
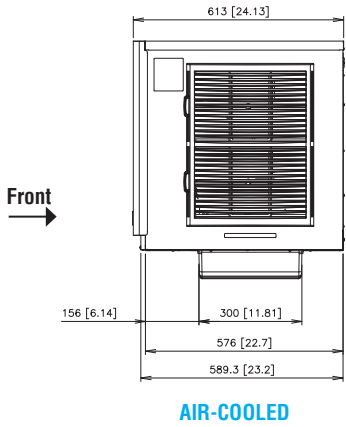


KMD-410M_H
04/11/17
Item # 13247

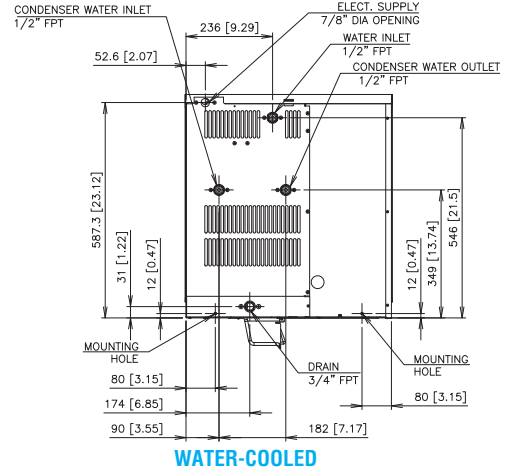
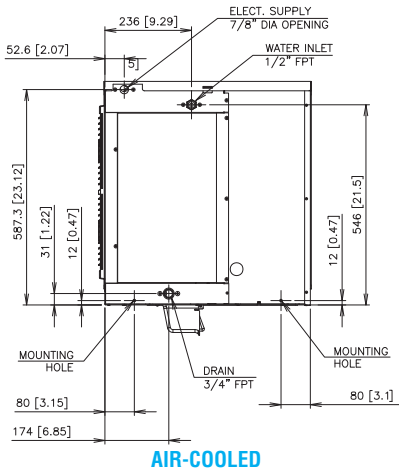
FRONT VIEW



SIDE VIEW



REAR VIEW



BOTTOM VIEW

