

# Champion<sup>®</sup>

The Dishwashing Machine Specialists

Project \_\_\_\_\_  
Item No. \_\_\_\_\_  
Quantity \_\_\_\_\_

## STANDARD FEATURES

- One-piece cast stainless steel upper & lower spray arm assemblies
- Internal removable scrap basket and two-piece scrap screen
- Standard vertical opening accommodates 18" x 26" sheet pans
- Wide 26" leakproof doors, internally-fitted
- Anti-jam conveyor drive system
- Energy Sentinel (Idle pump shut-off)
- Convenient top-mounted controls
- Automatic tank fill
- Common utility connections
- Door safety switch
- Door activated drain closure
- Enclosure panels (front and sides)
- Splash shields
- Low-water tank heat protection
- Rinse-saver device
- Stainless steel heavy-gauge construction, including base and feet
- Wash pump 2 Hp motor
- Stainless steel pump and impeller



## 44 WS 44"

Gas Heated Water Saver  
High Temperature Rack Conveyor  
Single-tank Dishwashing Machine with Prewash



## SPECIFIER STATEMENT

Specified unit will be Champion Model 44 high temperature rack conveyor dishwashing machine. Constructed of Type 304 stainless steel and measuring 44" long with 20-3/4" vertical opening. Features top mounted control cabinet; upper and lower one-piece stainless steel spray arm assemblies, removable internal scrap basket with two-piece scrap screen. Large 26" wash door with front access and double-hook safety latch. Anti-jam conveyor drive system.

1 year parts and labor warranty.

Single  
Source  
Gas Heating  
Systems



**E-SERIES**

Champion Industries, Inc.  
P. O. Box 4149, Winston-Salem, NC 27115  
Tel: 800/532-8591 Fax: 336/661-1979  
[www.championindustries.com](http://www.championindustries.com)

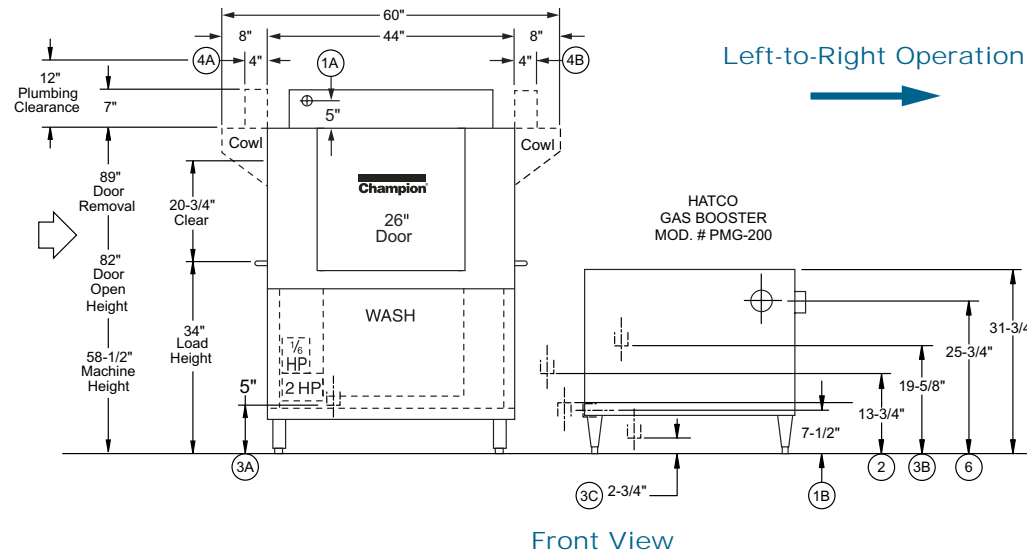


Utilities	
<b>1 Electrical</b>	A. Machine connection (see box) B. Booster connection requires 15 amps @ 120/60/1
<b>2 Hot Water</b>	3/4" NPT 140°F hot water connection. Flow pressure 25 psi.
<b>3 Drain</b>	A. 1-1/2 NPT machine connection. B. T/P relief valve connection.
<b>4 Vents</b> (Dishwasher) (4" x 16" outside)	A. Load end: 200 CFM @ 1/4" S.P. B. Unload end: 400 CFM @ 1/4" S.P.
<b>5 Gas</b>	3/4" NPT requires: <b>LP Gas – 52 CFH for 130,000 BTU/hr.</b> <b>Natural Gas – 130 CFH for 130,000 BTU/hr.</b>
<b>6 Gas Flue</b>	3" OD exhaust A. Left end of booster (specify when ordering) B. Rear of booster (specify when ordering) C. Right end of booster (specify when ordering)

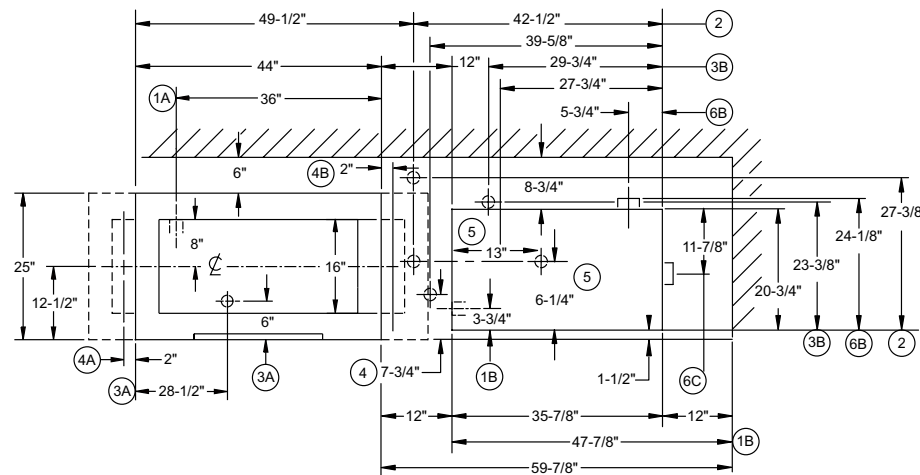
### Details, Dimensions & Connections

Volume crated: **191 cu. ft.**  
Shipping weight crated: **1050 lbs.**

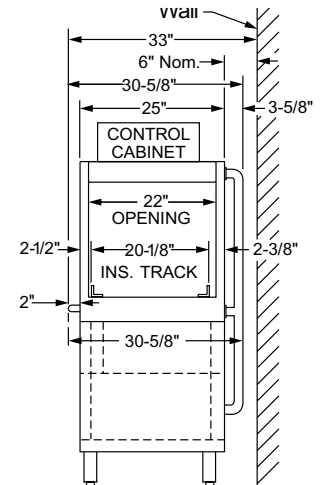
Dimensions shown in inches



Front View



Plan View



End View

**Warning:** Gas burner intake air and exhaust venting required in accordance with local codes. Exhaust must be vented outside.

**Warning:** Plumbing, gas and electrical connections should be made by qualified personnel who will observe all the applicable plumbing, sanitary, safety codes and the National Electrical Code.

**Note:** Water Hammer Arrestor (meeting ASSE-1010 standard or equivalent) to be supplied (by others) in common water supply line at service connection.

**Note:** The booster and machine come fully interplumbed complete with a blended phosphate water treatment system, pressure regulating valve, water hammer arrester, ASME temperature and pressure relief valve, drain valve, circulator pump, and temperature gauges installed and ready for connection to your water supply.

**Venting Notes:** Fabricated duct size: 3-7/8" x 15-7/8" (Outside dimensions)

**Note:** Specify vent location option on booster when ordering.

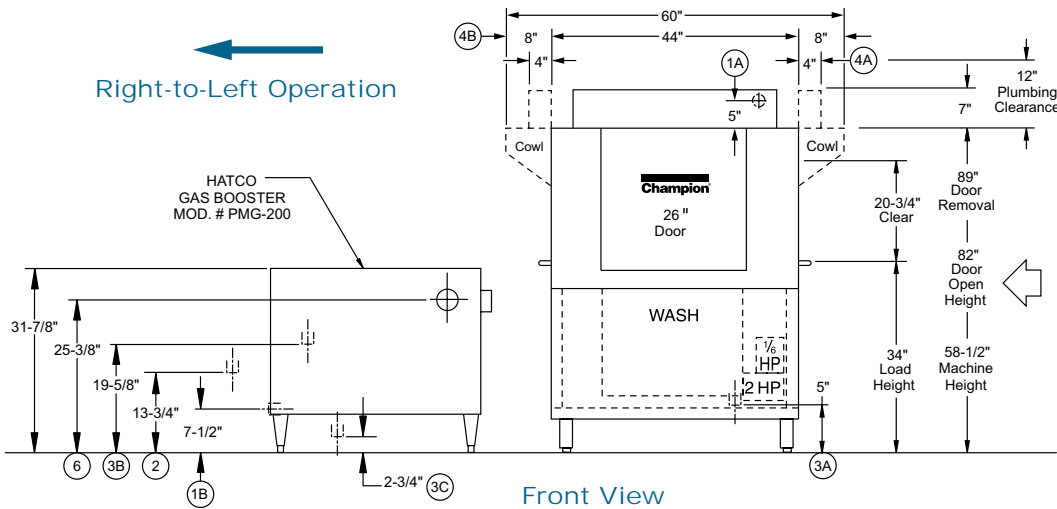
# Champion<sup>®</sup>

The Dishwashing Machine Specialists

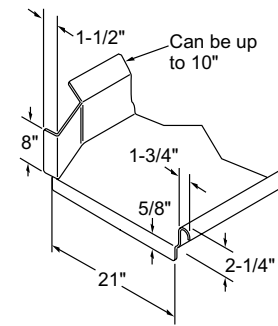


## 44WS GAS RACK CONVEYOR

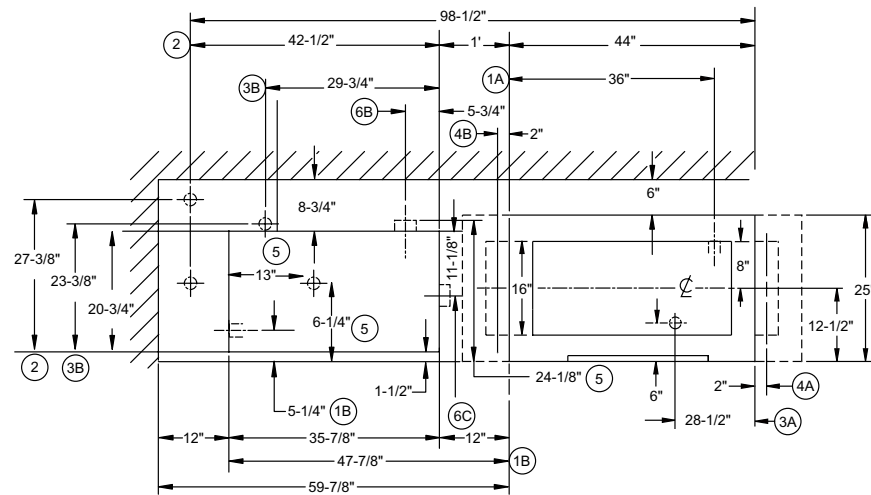
Gas Heated Water Saver  
High Temperature Rack Conveyor  
Single-tank Dishwashing Machine



Front View



Suggested Table Construction



Plan View

### SPECIFICATIONS

#### Capacities

Racks per hr. (NSF rated)	126
Wash tank (gal.)	20
Conveyor speed (ft./min.)	3.5

#### Motor horsepower

Drive	1/6
Wash	2

#### Water consumption

Gal. per hr. (max. use)	124
-------------------------	-----

#### Temperatures °F

Wash	160
Rinse	180

#### Heating

Gas Booster	
Natural	130,000 BTU/hr.
LP	130,000 BTU/hr.
40° rise & 70° rise Booster	
Natural	200,000 BTU/hr.
LP	200,000 BTU/hr.

#### Venting

Load end (minimum cfm)	200
Unload end (minimum cfm)	400

#### Standard 20" x 20" Rack Complement

Flat	1
Peg	2

Machine Load Amp			
Voltage	Rated Amps	Minimum Supply Ckt. Conductor Ampacity	Maximum Overcurrent Protective Device
208/60/1	16	20	20
240/60/1	15	20	20
208/60/3	8	15	15
240/60/3	8	15	15
480/60/3	4	15	15
575/60/3	3	15	15

# 44 WS 44"

Gas Heated Water Saver  
High Temperature Rack Conveyor  
Single-tank Dishwashing Machine with Prewash



**Champion**<sup>®</sup>  
The Dishwashing Machine Specialists

## OPTIONS & ACCESSORIES

- Blower-dryer with 60" hood, table, legs and cradle assembly
- Cantilever sideloader (with or without hood) for 90° load operation (see "Table Systems" catalog sheet)
- Extended pawl bar (extended drive unit) for use with load tabling
- 90° Motorized rack curve (specify load or unload)
- 180° Motorized rack curve (specify load or unload)
- Racks: dish or open racks (specify type)
- Roller conveyor table (mobile or stationary)
- Table limit switch, unmounted (recommended on all rack conveyor installations)
- Vent cowl, stainless steel with 7" stack and locking damper
- Extended Vent hood, stainless steel with 7" stack and locking damper
- Water pressure regulating valve (unmounted)
- Vent fan control switch
- Water hammer kit
- Drain temp kit
- Vertical clearance through machine: 24" (instead of standard 20-3/4") for large ware



**Model MRC 180**  
180° Motorized  
Rack Curve  
*(Must be ordered with  
Roller Conveyor Table)*



**Model MRC 90**  
90° Motorized  
Rack Curve  
*(Must be ordered with  
Roller Conveyor Table)*



**Cantilever  
Sideloader**  
*(No hood)*

**Model RCT 64  
or RCT 84**  
Roller  
Conveyor Table

