

Champion®

The Dishwashing Machine Specialists

Project _____
Item No. _____
Quantity _____

STANDARD FEATURES

- One-piece cast stainless steel upper & lower spray arm assemblies
- Internal removable scrap basket with two-piece scrap screen
- Standard vertical opening accommodates 18" x 26" sheet pans
- Wide 15-1/2" and 26" leakproof doors, internally-fitted
- Anti-jam conveyor drive system
- Energy Sentinel (Idle pump shut-off)
- Convenient top-mounted controls
- Automatic tank fill
- Common utility connections
- Door safety switch
- Door activated drain closures
- Enclosure panels (front and sides)
- Splash shields
- Low-water tank heat protection
- Rinse-saver device
- Stainless steel heavy-gauge construction, including base and feet
- Electric tank heat
- Prewash pump 1 Hp motor
- External prewash scrap basket
- Wash pump 2 Hp motor
- Stainless steel pump and impellers



MODEL 66 PW

44" Single Tank with 22" Prewash
High-Temperature
Rack Conveyor Dishwashing Machine



Shown with Vent Cowl
and Damper Option

SPECIFIER STATEMENT

Specified unit will be Champion Model 66 PW high temperature rack conveyor dishwashing machine with 22" prewash. Constructed of Type 304 stainless steel and measuring 66" long with 20-3/4" vertical opening. Features top mounted control cabinet; upper and lower one-piece stainless steel spray arm assemblies, removable internal scrap basket with two-piece scrap screen, external prewash scrap basket. Large 15-1/2" prewash and 26" wash front access doors with double-hook safety latches. Anti-jam conveyor drive system. 1 year parts and labor warranty.



2674 N. Service Road,
Jordan Station, Ontario, Canada L0R 1S0
Tel: 800/263-5798 Fax: 905/562-4618

Champion Industries, Inc.
P. O. Box 4149, Winston-Salem, NC 27115
Tel: 800/532-8591 Fax: 336/661-1979
www.championindustries.com

CH066

(1M) 1/08 Printed in U.S.A.

Champion[®]

The Dishwashing Machine Specialists

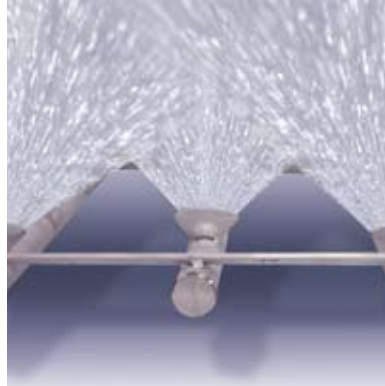
MODEL 66 PW

44" Single Tank with 22" Prewash
High-Temperature
Rack Conveyor Dishwashing Machine

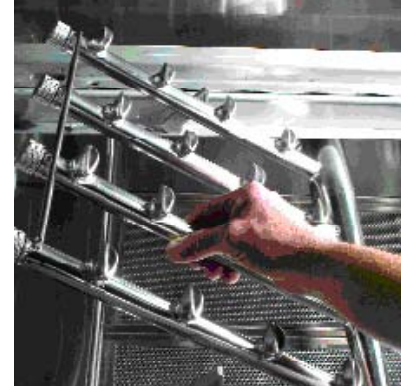
EFFICIENT NEW SPRAY SYSTEM DESIGN

To make the E-Series more efficient and more forgiving we designed a new spray arm system that includes:

- Wall-of-water spray pattern via stainless steel fluted directional spray jets for quick and efficient washing
- Easily removable spray arm assembly for ease of cleaning
- Stainless steel pump housing and impeller
- Larger tanks hold more water for better washing results



Wall-of-Water Spray Pattern

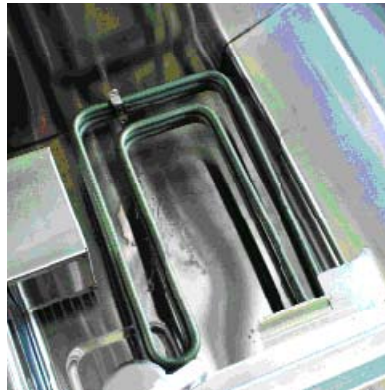


One-Piece Cast Stainless Steel Spray Assembly

INTEGRATED BOOSTER HEATER

As well as the E-Series performs, we created a way to make it perform even better. The electric booster heater may be optional, but it is an exceptional value — engineered within the E-Series footprint to offer a variety of advantages over other booster designs, such as:

- Inter-plumbed and inter-wired
- One control shuts off washer and booster
- 27 kW for 40°F rise
- 48 kW for 70°F rise (external)
- Conductive heat transfer to wash tank
- Stainless steel booster heater lasts the life of the machine
- Integrated design saves floor space



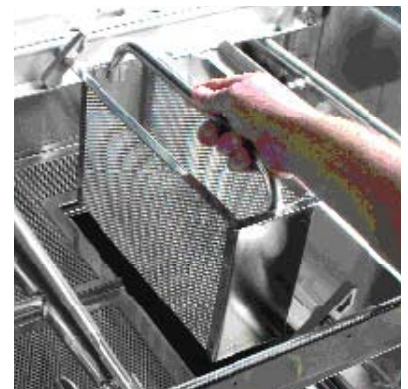
Large Heating Element



Stainless Steel Built-in Nested Booster



Two-Piece Scrap Screen



Built-in Scrap Basket

E-SERIES

www.championindustries.com

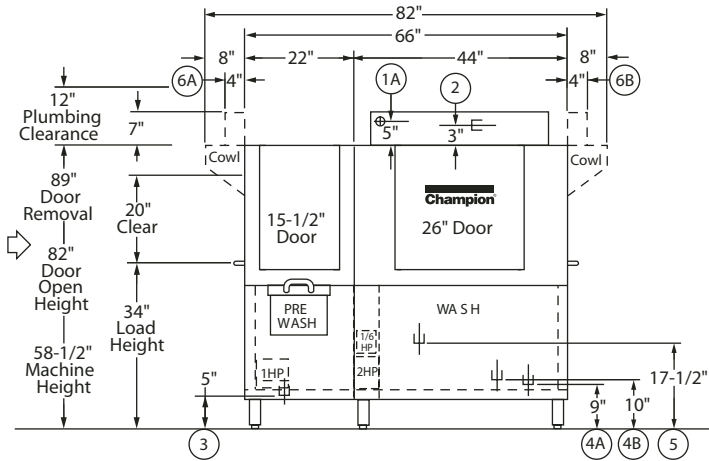
KaTom Restaurant Supply, Inc.

MODEL 66 PW

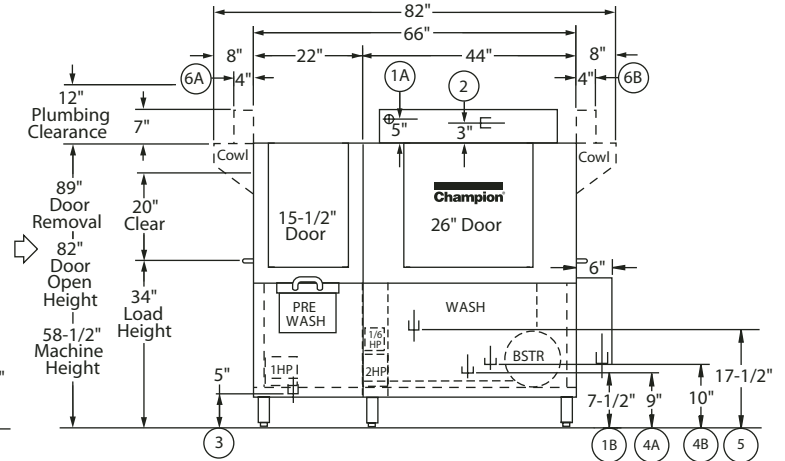
44" Single Tank with 22" Prewash
High-Temperature
Rack Conveyor Dishwashing Machine

Champion[®]

The Dishwashing Machine Specialists

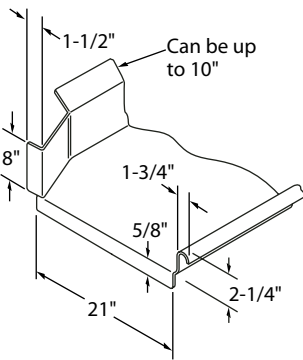


**Front View
Without Booster**

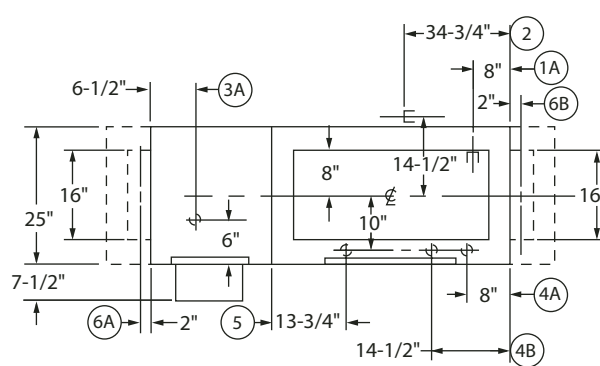


**Front View
With Booster**

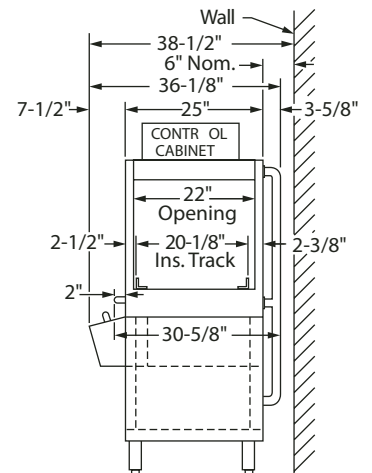
Left-to-Right Operation



**Suggested Table
Construction**



Plan View



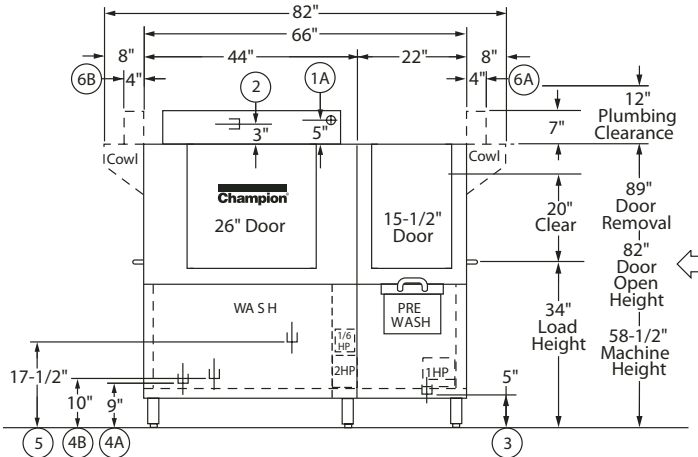
End View

MODEL 66 PW

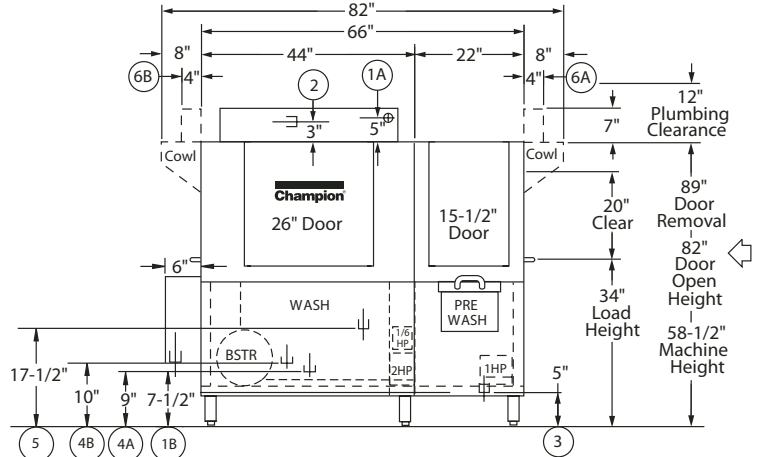
44" Single Tank with 22" Prewash
High-Temperature
Rack Conveyor Dishwashing Machine

Champion[®]

The Dishwashing Machine Specialists

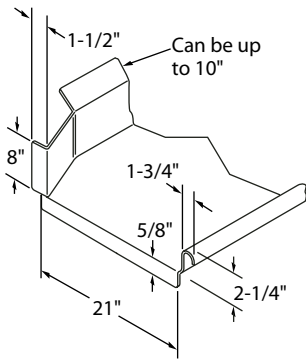


**Front View
Without Booster**

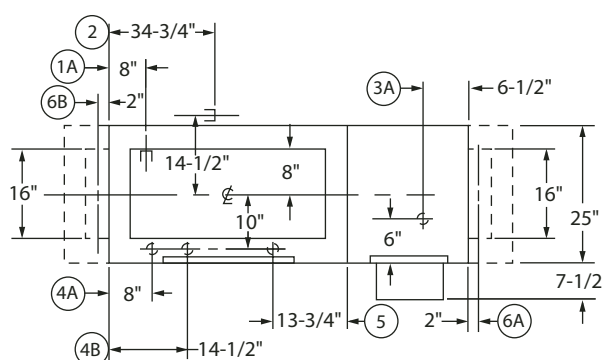


**Front View
With Booster**

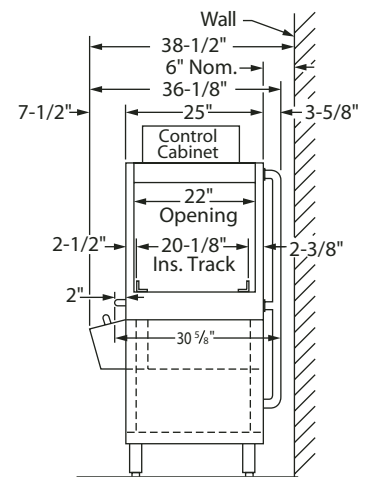
Right-to-Left Operation



**Suggested Table
Construction**



Plan View



End View

MODEL 66 PW

44" Single Tank with 22" Prewash
High-Temperature
Rack Conveyor Dishwashing Machine

Champion[®]

The Dishwashing Machine Specialists

Volume crated: **152 cu. ft.**
Shipping weight crated: **800 lbs.**

Dimensions shown in inches

| Utilities | |
|--|--|
| 1 Electrical | A Machine connection (see Table A) B Booster connection (see Table B) |
| 2 Hot Water | 3/4" NPT 180°F/82°C min. hot water connection. (Machine without booster.) 3/4" NPT 140°F/60°C min. hot water connection. (40°F/22°C rise booster) 3/4" NPT 120°F/49°C min. hot water connection. (60°F/34°C rise booster) 3/4" NPT 110°F/49°C min. hot water connection. (70°F/39°C rise booster) Flow pressure 20-22 psi. |
| 3 Drain | 1-1/2" NPT machine connection. Maximum flow 15 gpm. |
| 4 Steam | A 3/4" NPT machine connection. Flow pressure 15-30 PSI. (Steam coil) B 3/4" NPT machine connection. Flow pressure 15-30 PSI. (Steam injector) |
| 5 Condensate (no back pressure) | 1/2" NPT machine return to boiler |
| 6 Vents | A Load end: 200 CFM @ 1/4" S.P. B Unload end: 400 CFM @ 1/4" S.P. (With blower-dryer increase room ventilation by 600 CFM.) |

TABLE A - MACHINE CONNECTION

| Machine only | | | |
|--------------|------------|--|---------------------------------------|
| Elec. Specs. | Rated Amps | Minimum Supply Ckt. Conductor Ampacity | Maximum Overcurrent Protective Device |
| 208/60/1 | 103 | 125 | 125 |
| 240/60/1 | 90 | 110 | 110 |
| 208/60/3 | 58 | 70 | 70 |
| 240/60/3 | 50 | 60 | 60 |
| 480/60/3 | 25 | 35 | 35 |
| 575/60/3 | 19 | 25 | 25 |

Plumbing Notes: Because of the variation in house-supplied steam and water pressures, steam and water pressure regulating valves (PRVs) may be needed. (Water PRV is standard on machines with booster.) The PRVs can either be purchased from Champion or obtained locally.

Venting Notes: Fabricated duct size:
3-7/8" x 15-7/8" (Outside dimensions)

TABLE B - BOOSTER CONNECTION

| 40°F/22°C Rise – 27kW Electric built-in booster (booster only) | | | |
|---|------------|--|---------------------------------------|
| Elec. Specs. | Rated Amps | Minimum Supply Ckt. Conductor Ampacity | Maximum Overcurrent Protective Device |
| 208/60/3 | 75 | 100 | 100 |
| 240/60/3 | 65 | 80 | 80 |
| 480/60/3 | 32 | 40 | 40 |
| 575/60/3 | 27 | 35 | 35 |

| 70°F/39°C Rise – 48kW Electric built-in booster (booster only) | | | |
|---|------------|--|---------------------------------------|
| Elec. Specs. | Rated Amps | Minimum Supply Ckt. Conductor Ampacity | Maximum Overcurrent Protective Device |
| 208/60/3 | 133 | 175 | 175 |
| 240/60/3 | 115 | 150 | 150 |
| 480/60/3 | 58 | 80 | 80 |
| 575/60/3 | 48 | 60 | 60 |

| Machine and steam built-in booster | | | |
|------------------------------------|------------|--|---------------------------------------|
| Elec. Specs. | Rated Amps | Minimum Supply Ckt. Conductor Ampacity | Maximum Overcurrent Protective Device |
| 208/60/1 | 25 | 35 | 35 |
| 240/60/1 | 22 | 30 | 30 |
| 208/60/3 | 13 | 20 | 20 |
| 240/60/3 | 11 | 20 | 20 |
| 480/60/3 | 6 | 15 | 15 |
| 575/60/3 | 5 | 15 | 15 |

SPECIFICATIONS

Capacity

| | |
|---------------------------|-----|
| Racks per hr. (NSF rated) | 208 |
| Wash tank (US gal.) | 21 |
| Conveyor speed (ft./min.) | 5.8 |

Motor Horsepower

| | |
|---------|-----|
| Drive | 1/6 |
| Prewash | 1 |
| Wash 2 | |

Water Consumption

| | |
|----------------------------|------|
| US Gal. per hr. (max. use) | 234 |
| US Gal. per rack | 1.12 |

Heating

| | |
|--|-----|
| Tank Heat, electric (kW) | 15 |
| Tank heat, steam (lbs./hr. required at 15 PSI flow pressure) | 75 |
| Electric booster (built-in) (kW supplied for 40°F rise) | 27 |
| Electric booster (kW supplied for 70°F rise) | 48 |
| Steam booster (lbs./hr. required for 40°F rise) | 120 |
| Steam booster (lbs./hr. required for 70°F rise) | 205 |

Venting

| | |
|--------------------------|-----|
| Load end (minimum CFM) | 200 |
| Unload end (minimum CFM) | 400 |

Standard 20" x 20" rack complement

| | |
|------|---|
| Peg | 2 |
| Flat | 1 |

Warning: Plumbing and electrical connections should be made by qualified personnel who will observe all the applicable plumbing, sanitary, safety codes and the National Electrical Code.

Note: Water Hammer Arrestor (meeting ASSE-1010 standard or equivalent) to be supplied (by others) in common water supply line at service connection.

MODEL 66 PW

44" Single Tank with 22" Prewash
High-Temperature
Rack Conveyor Dishwashing Machine

Champion®

The Dishwashing Machine Specialists

OPTIONS & ACCESSORIES

- Tank heat: choice of steam coil, steam injector, hot water coil
- Blower-dryer with 60" hood, table, legs and pawl bar assembly
- Booster Heaters
(completely interplumbed, controls are interwired)
 - Electric: 27 kW (40°F rise)
(built-in 3 phase only)
 - Electric: 48 kW (external 70°F max. rise)
(3 phase only)
 - Steam: 40°F - 70°F rise
- Cantilever sideloader (with or without hood) for 90° load operation
- Extended pawl bar (extended drive unit) for use with load tabling
- 90° Motorized rack advance conveyor (unload)
- 180° Motorized rack advance conveyor (unload)
- Racks: peg or flat racks (specify type)
- Roller conveyor table (mobile or stationary)
- Steam pressure regulating valve (unmounted)
- Table limit switch, unmounted (recommended on all rack conveyor installations)
- Vent cowl, stainless steel with 7" stack and locking damper
- Water pressure regulating valve (unmounted) (standard with booster)
- Vent fan control
- Single point electrical connection

- Model MRA 90**
90° Motorized Rack Advance Curve
(Must be ordered with Roller Conveyor Table)



- Model MRA 180**
180° Motorized Rack Advance Curve
(Must be ordered with Roller Conveyor Table)



**Model RCT 64
or RCT 84**

Roller Conveyor
Table

- Cantilever Sideloader**
(no hood)

