



EST-44H

High Temperature
44" Conveyor
Dishwasher

Water Consumption
Only .49 Gallons
Per Rack of Dishes
Meets ENERGY STAR

OPTIONAL VENT
HOODS

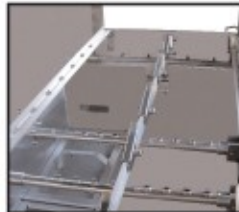


FEATURES:

- Automatic water control system.
- 243 racks / 970 covers per hour.
- Economical to operate. Uses only .49 gallons of water per rack of dishes.
- Single control switch activation.
- Power rinse heater system.
- Unique 3-stage washing process provides wash, power rinse and final rinse all in a 44" machine.
- Automatic soil purging system filters wash water and traps plate debris into an external tray. Tray can be easily removed for cleaning.
- All stainless steel construction offers durable performance and years of trouble-free operation.
- Chemical resistant industrial heaters are proven to be more durable than commercial grade heaters.
- Large 19" opening accommodates larger items and utensils.
- Auto start/stop makes operation more energy efficient.
- Easy to remove and replace curtains for cleaning.
- Includes table limit switch and rack saver clutch system that protects the machine, dishracks and table from damage.
- Stainless steel chemical injection chamber.



New energy efficient oil-free drive system.



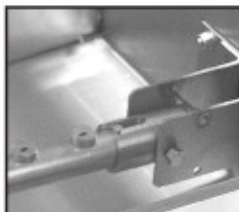
Strategically located spray arms with spray pattern positioned for additional wash coverage.



Large 19" opening accommodates larger items and utensils.



Shown with optional cornerfeed table. Available right or left.



Easy to remove wash arms with captive end caps. **Never lose another end cap again!**



New user friendly single action control switch with easy access and easy to clean around control box.

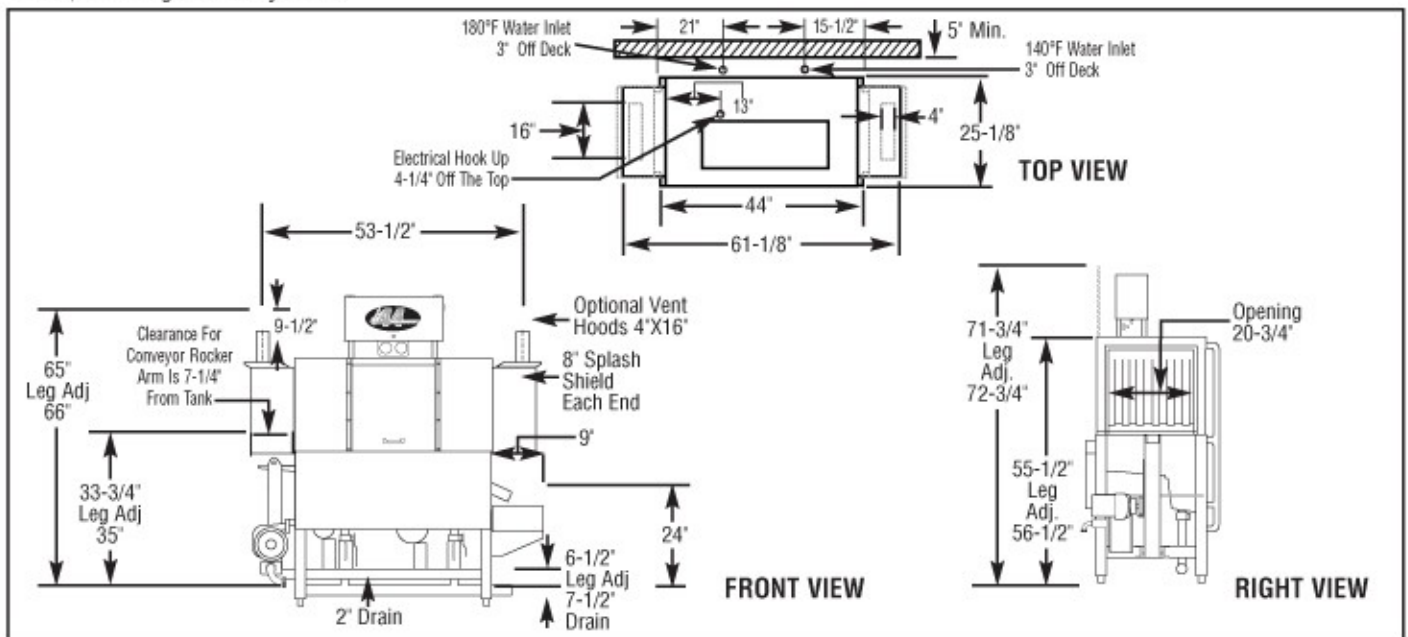




EST-44H

High Temperature
44" Conveyor
Dishwasher

WARNING: Plumbing connections must be made by a qualified service company who will comply with all (necessary) Federal, State, and Local Health, Plumbing and Safety codes.



Specifications:

MODEL EST-44H	USA	METRIC		USA	METRIC	
OPERATING CAPACITY			DIMENSIONS			
RACKS PER HOUR (NSF RATED)	243	243	DEPTH	25-1/8"	(64cm)	
CONVEYOR SPEED	6.75 FT./MIN.	(206 CM/MIN.)	WIDTH	44"	(111.7cm)	
WASH PUMP MOTORS HP	1	1	HEIGHT	55-1/2"-56-1/2"	(140.97-143.51cm)	
RINSE PUMP MOTOR HP	1/3	1/3	STANDARD TABLE HEIGHT	34"	(86cm)	
CONVEYOR MOTOR HP	1/3	1/3	MAX HEIGHT CLEARANCE	19"	(48cm)	
WATER INLET - FILL	1/2"	(1.27cm)	STANDARD DISHRACK			
WATER INLET - FINAL RINSE	1/2"	(1.27cm)	DIMENSIONS	19-3/4"X19-3/4"	(50X50cm)	
DRAIN SIZE	2"	(5.1cm)	ELECTRICAL RATING	VOLTS	PHASE	AMPS
FINAL RINSE PRESSURE	20 ± 5psi	(1.41 kg/cm ²)		208	1	69
WASH TANK CAPACITY				240	1	76
PRE-RINSE	4.25 GAL	(16.0 L)		208	3	46
WASH	11.75 GAL	(44.5 L)		240	3	51
TOTAL	16.0 GAL	(60.5 L)				
WASH PUMP CAPACITY			WASH TANK HEATER	10kW		
EACH	52 GPM	(197 LPM)	RINSE TANK HEATER	3kW		
OPERATING TEMPERATURE			SPECIFY DIRECTION OF RACK TRAVEL (RIGHT TO LEFT, LEFT TO RIGHT) WHEN ORDERING			
WASH	150°F-160°F	(66°C/71°C)	SHIPPING WEIGHT			
PUMPED RINSE	150°F-160°F	(66°C/71°C)	APPROXIMATE	662#	(300kg)	
FINAL RINSE	180°F-195°F	(82°C/90°C)				
WATER CONSUMPTION						
PER RACK (FINAL RINSE)	.49 GAL	(1.8 L)				
PER HOUR (FINAL RINSE)	119 GPH	(450 LPH)				

Summary Specifications: Model EST-44H

The Model EST-44H high temperature conveyor dishwasher meets ETL, UL, and CUL sanitation and construction standards utilizing 180°F final rinse water. The EST-44H performs three separate washing functions including a built-in power rinse, all in a 44" space. The EST-44H washes up to 243 racks per hour and uses a minimum .49 gallons of water per rack while achieving sparkling, clean, dry dishes. Constructed entirely of stainless steel.

Available Models

- EST-44H R/L Right to Left
- EST-44H L/R Left to Right

Available Options

- Corner Feed Table (**FACTORY INSTALLED ONLY**)
- Vent Hood with 4" x 16" Vent and Damper Control (2 per set)
- Alternative electrical options
- C-24 Hatco Booster Heater (40° rise), other sizes available
- Stainless steel dishtables
- Motor Cover
- Drain Water Tempering Kit

