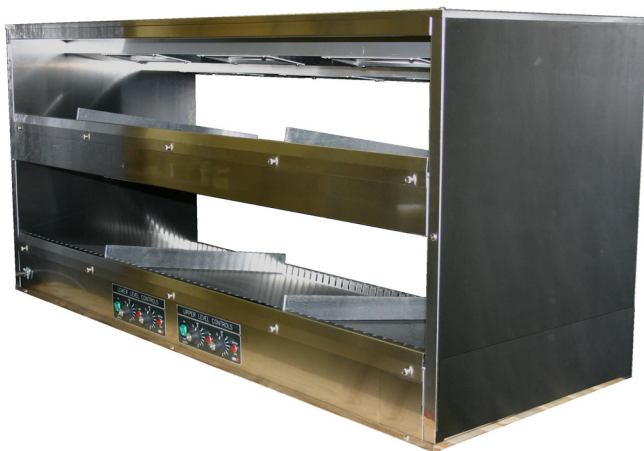




Fresh ideas in foodservice equipment



Pictured: 2TSM-6224

Sandwich Merchandiser

Model: 2TSM-2624, 2TSM-3824,
2TSM-5024, 2TSM-6224

Countertop Sandwich Warmer with Ceramic Infrared Top Heat

BKI's Sandwich Merchandising equipment offers you flexibility and extended holding time. Designed with your unique environment in mind, this unit is available in a variety of lengths: 26, 38, 50, and 62 inch models.

Agency Approvals:



Standard Features:

- Ceramic infrared top heat
- Individual thermostatic controls
- Slot dividers

BKI North America
PO Box 80400
Simpsonville, SC 29680-0400 USA
Telephone: (864) 963-3471
Toll Free: (800) 927-6887

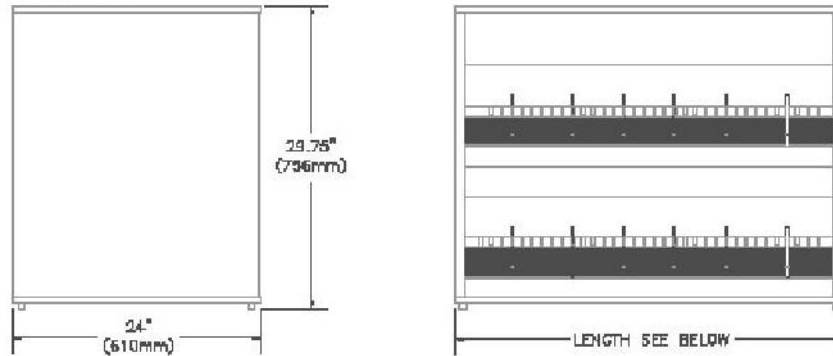
BKI Europe
Theale Technology Centre
Station Road • Theale
Reading • West Berkshire • RG7 4AA
Telephone: 0870 9904242 • Fax: 0870 9904243

 **Standex**
Food Service Equipment Group

2TSM-2624, 2TSM-3824, 2TSM-5024, 2TSM-6224

Equipment Dimensions:

TWO TIER SANDWICH WARNERS



Mechanical Specifications:

Dimension	2TSM-2624	2TSM-3824	2TSM-5024	2TSM-6224
Height	29 3/4" (444.5mm)	29 3/4" (444.5mm)	29 3/4" (444.5mm)	29 3/4" (444.5mm)
Width	26" (660.4mm)	38" (965.2mm)	50" (1270.0mm)	62" (1574.8mm)
Depth	24" (609.6mm)	24" (609.6mm)	24" (609.6mm)	24" (609.6mm)
Floor Space	4.33 sq.ft. (0.40 sq.m)	6.33 sq.ft. (0.59 sq.m)	8.33 sq.ft. (0.77 sq.m)	10.33 sq.ft. (0.96 sq.m)

Electrical Options:

	2TSM-2624	2TSM-3824	2TSM-5024	2TSM-6224
Volts	120	120/208	120/208	120/208
Amps	9.13	9.18	9.66	13.02
Breaker	15	20	20	20
kW	1.090	1.730	1.830	2.460
Wires	2	3	3	3
Phase	1	1	1	1

Options

- Direct sealed counter mount or 4" table legs
- Right or Left side mounted power cord
- Slot dividers

BKI North America
PO Box 80400
Simpsonville, SC 29680-0400 USA
Telephone: (864) 963-3471
Toll Free: (800) 927-6887

BKI Europe
Theale Technology Centre
Station Road • Theale
Reading • West Berkshire • RG7 4AA
Telephone: 0870 9904242 • Fax: 0870 9904243

 **Standex**
Food Service Equipment Group