

Project Name: _____ AIA#: _____

Model #: _____ Location: _____

SIS#: _____ Item #: _____ Quantity: _____



Electric Countertop Economy Griddles

*Performance, Quality
and Economy — what you
get with Globe!*



PG36E



Thermostats: The temperature is thermostatically controlled. Griddle is equipped with one thermostat per various cooking service interval. For the 24" griddle - every 12", for the 36" griddle - every 18".

Consistent Heating: Griddle will maintain a constant, selected temperature to ensure product consistency.

Standard Equipment: Standard equipment includes the electric griddle and easy-to-remove catch tray.

Models

- PG24E PG36E (Pictured)

Standard Features

- Available in 24" and 36" widths
- Highly polished griddle plate fully welded to stainless steel frame, 3/8" plate thickness
- Stainless steel cool-to-touch front edge
- Heat elements and thermostats control every 12" to 18"
- Easy ON/OFF switch for each element
- Two 70°F – 575°F Thermostats
- Spatula wide grease trough
- Seamlessly welded 3 1/2" splash guard
- Removable, easy-to-clean, stainless steel catch tray
- 3 1/2" stainless steel adjustable feet
- Attached 208/240V, 4-foot power cord and plug standard on PG24E only

Applications

- Designed for lighter duty cooking applications
- Smaller service for limited breakfast, lunch or dinner menu items

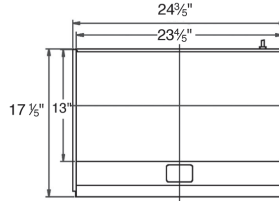
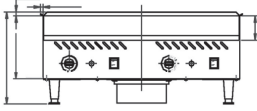
Warranty

- *One year parts and labor*

Approved by: _____ Date: _____

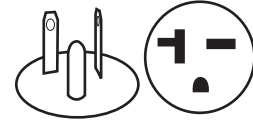


PG24E

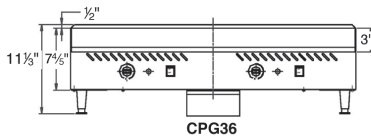


CPG24

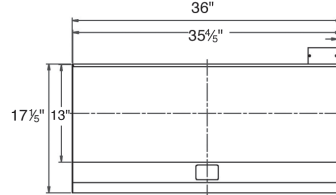
Plug Type - NEMA 6-20



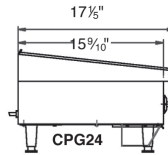
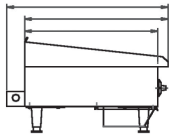
PG36E



CPG36



CPG36



CPG24

For Indoor Use Only

SPECIFICATIONS

| Model | Cooking Area | Electrical |
|-------|---|--|
| PG24E | griddle area 23.8" x 13" (60.5cm x 33cm) | 208-240V • 2700W/3600W (2.7/3.6 KW) 13/15 amps Attached 4-foot flexible, three-wire cord with ground plug (PG24E only NEMA 6-20P). |
| PG36E | griddle area 35.8" x 13" (91cm x 33cm) | 208-240V • 4000/5400W (4.05/5.4 KW) 19.5/22.5amps (PG36E MUST be hard wired) |

DIMENSIONS | SHIPPING INFORMATION

Cartons are reinforced for shipping. The weight and dimensions of this reinforced carton are included above and may vary from shipment to shipment.

| Model | Overall Dimensions | Net Weight | Shipping Dimensions | Ship Wt |
|-------|--|---------------------|--|-------------------|
| PG24E | 24.6" W x 17.2" D x 11.3" H (62.6 cm x 43.6 cm x 28.7 cm) | 63.05 lbs (28.6 kg) | 28.74" W x 22.05" D x 11.42" H (73 cm x 56 cm x 29 cm) | 70 lbs (31.75 kg) |
| PG36E | 36" W x 17.2" D x 11.3" H (91.4 cm x 43.6 cm x 28.7 cm) | 88.8 lbs (40.3 kg) | 38.39" W x 203.67" D x 11.42" H (97.5 cm x 52.5 cm x 29 cm) | 117 lbs (53.1 kg) |

Electric griddle is manual control and constructed of stainless steel with cool-to-touch front edge. Griddle is available in 24" and 36" widths. Griddle has two 70°F – 575°F Thermostats that control every 12" to 18". Griddle also has a spatula wide grease trough, seamlessly welded 3 1/2" splash guard and removable, easy-to-clean, stainless steel catch tray, 3 1/2" stainless steel adjustable feet, attached 208/240V, 4-foot power cord and plug standard on PG24E only. Griddle is NSF and UL listed. One year parts and one year labor warranty.

ADDITIONAL ACCESSORIES

CATCH TRAY Continuously collects grease and crumbs while cooking on the griddle.