

**HOBART**701 S Ridge Avenue, Troy, OH 45374  
1-888-4HOBART • www.hobartcorp.com**1HF50D  
ELECTRIC FRYER****HOBART****STANDARD FEATURES**

- Stainless steel cabinet
- 6" adjustable nickel plated, noncorrosive legs
- 16 gauge stainless steel fry tank, 50 lb. capacity.  
Ten year limited fry tank warranty
- 1" full port ball type drain valve
- 17 KW low watt density ribbon style heating elements
- Fat melt cycle
- High limit control
- Cleaning brush and clean-out rod

**ACCESSORIES**

- Stainless steel tank cover
- Grease protector strips
- Single large basket - 13"w x 13¼"d x 5½"h
- Set of twin baskets - 6⅞"w x 13¼"d x 5½"h
- Set of tri baskets - 4¼"w x 13¼"d x 5½"h
- Set of 4 casters (2 locking)
- Flanged feet

**MODEL**

- 1HFD50:** Solid state temperature control adjusts from 200° to 390°F within +/-2 degrees. Multiple fat modes, fast recovery, boil out mode, and two countdown timers.

Specifications, Details and Dimensions on Reverse Side.

**1HF50D ELECTRIC FRYER**

# 1HF50D ELECTRIC FRYER



701 S Ridge Avenue, Troy, OH 45374  
1-888-4HOBART • www.hobartcorp.com

## SPECIFICATIONS

**CONSTRUCTION:** Stainless steel front and sides. Mounts on 6" adjustable nickel plated, noncorrosive legs. 16 gauge stainless steel fry tank. 1" full port ball type drain valve.

**CLEARANCES:** All models require a 6" clearance at both sides and rear adjacent to combustible construction.

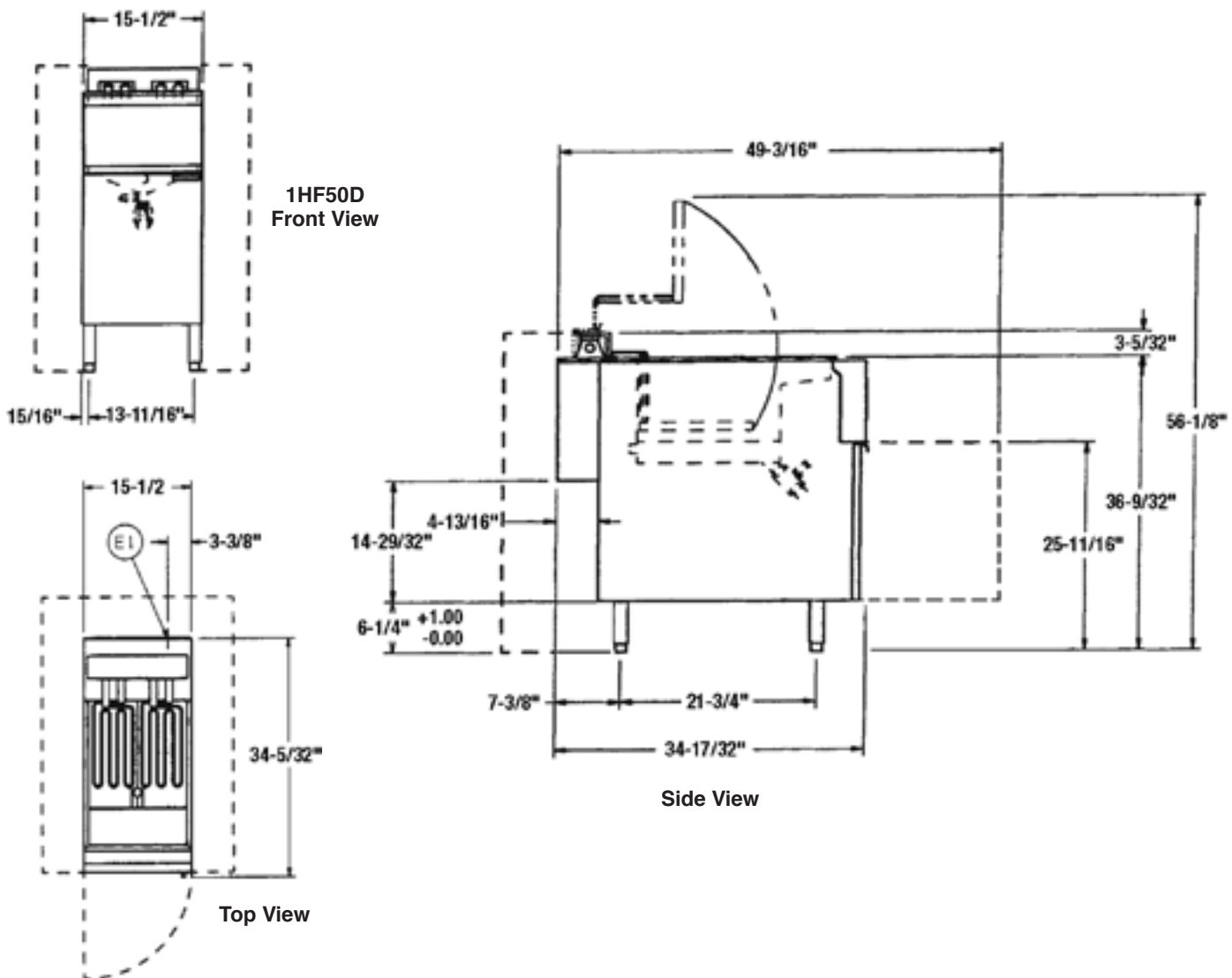
**CAPACITY:** Fry tank holds 50 lbs. of fry compound and features twin fry baskets with plastic coated handles.

**ELECTRICAL:** 208/60/3, 480/60/3. 17 KW low watt density ribbon style heating elements.

**SHIPPING WEIGHT:** 200 lbs.

ELECTRICAL CHARACTERISTICS									
MODEL NO.	TOTAL KW CONN.	3 PH LOADING KW PER PHASE		NOMINAL AMPS PER LINE WIRE					
				3 PHASE					
		208 & 480V		208 VOLT			480 VOLT		
		X-Y	X-Z	X	Y	Z	X	Y	Z
1HF50D	17	5.6	5.6	47	47	47	20	20	20

## DETAILS AND DIMENSIONS



As continued product improvement is a policy of Hobart, specifications are subject to change without notice.