



Project Name _____

Item No. _____

Quantity _____

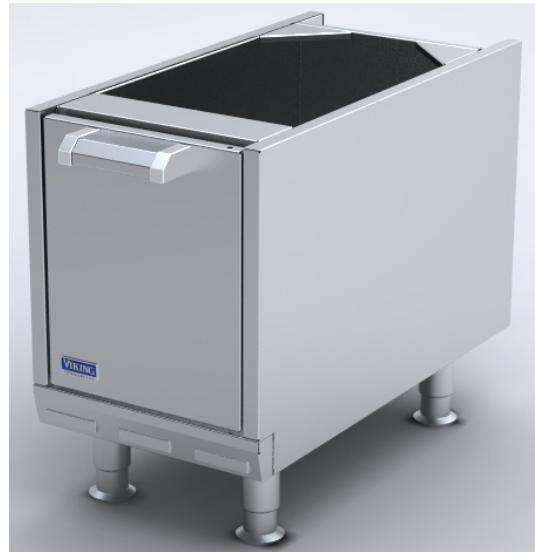
Cabinet Bases

SPECIFICATION

- Heavy duty cabinet bases with a modular design for maximum configuration and design flexibility. Modular tops bolt to this unit.
- Unit is to have stainless steel front, sides, and bottom. Welded stainless steel body with double wall construction. Full cabinet access when optional doors are open.
- Available in sizes of 12", 18", 24", 30", and 36" widths.

STANDARD FEATURES

- Welded body construction
- Heavy-duty beveled handle for drawer or door
- Inner and exterior stainless steel walls
- 6" legs



V18CDR

OPTIONS

- Stainless steel center shelf
- Heavy-duty hinged insulated doors (D)
- Full extension slide-out drawer with heavy-duty smooth roller slides (R), (Not available with door)
- Optional divider frame to accommodate spice pans in drawer
- 6" high swivel casters, 2 w/brakes
- 6" adjustable casters, 2 w/brakes
- For models with a single door (12" and 18"), please specify left (L) or right (R)
- Common kick panel available

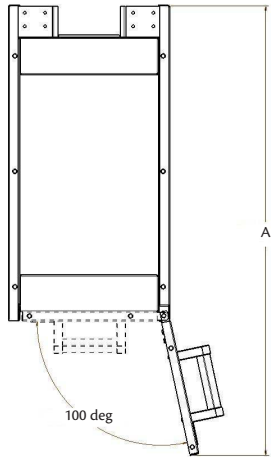
Note: All Viking units are modular. Rangetops are separate units and have separate model numbers from bases. To complete a range there must be a base item added, such as oven, cabinet base, refrigerated base or legs.

Example: A 6 burner range with oven would be a V36B6 plus a V36SO



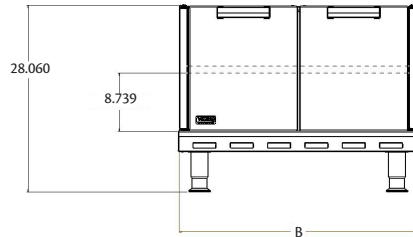
Project Name _____

Item No. _____

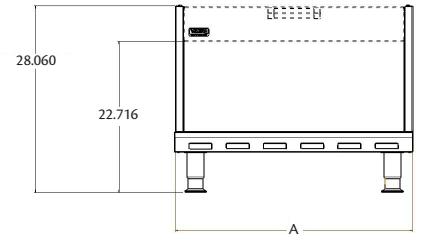


V12CDL, V12CDR,
V18CDL, V18CDR

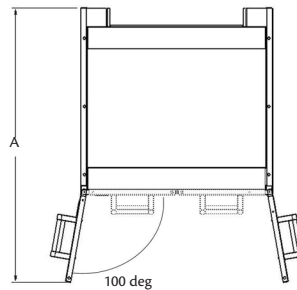
MODEL	A
V12CDL/V12CDR	44.22
V18CDL/V18CDR	50.10
V24CD	45.45
V30CD	48.40
V36CD	51.35



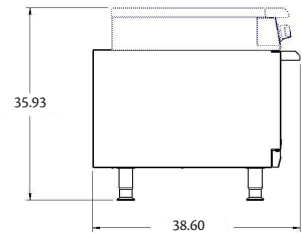
Cabinet Base with Doors (CD) -- 24", 30", 36"
shown with optional shelf



Open Cabinet Base (CB)
shown with optional drawer (CR)



V24CD, V30CD, V36CD



UTILITY INFORMATION

Model	Description	Approx SHP WT	
V12C__	12" wide Cabinet Base	50 lbs	<p>GAS: No gas requirements for cabinet bases.</p> <p>ELECTRICAL: No electrical requirements for cabinet bases.</p> <p>EXHAUST: No exhaust requirements for cabinet bases.</p>
V18C__	18" wide Cabinet Base	75 lbs	
V24C__	24" wide Cabinet Base	100 lbs	
V30C__	30" wide Cabinet Base	125 lbs	
V36C__	36" wide Cabinet Base	150 lbs	
<p>Suffix: B = Cabinet Only (no drawer or doors) R = Drawer DL = Door – Hinged on Left (12" and 18" models) DR = Door – Hinged on Right (12" and 18" models)</p>			

Note: Viking Commercial products are not approved or recommended for residential use.

Note: In line with company policies, Viking Range Corporation reserves the right to change material and specifications without notice.